

# We Make The Future

Explore the Symetriverse of Audio System Solutions



All specifications are subject to change.

# We Make The Future



Born out of a recording studio in 1976, Seattle-based Symetrix is a leader in high-performance audio hardware, software, and AV control systems. Backed by award-winning technical support and customer care, Symetrix's reputation is built on innovation and craftsmanship. Symetrix products are known for their superior sound quality, reliability and how easy they are to use. Symetrix solutions are elegant, intuitive and solve a host of audio needs.

 **Symetrix**  
Making Quality Connections

# Making Quality Connections

## SYMETRIX PROVIDES COMPLETE END-TO-END AUDIO PROCESSING AND CONTROL SOLUTIONS FOR INSTALLATIONS OF VIRTUALLY ANY SIZE

### FAMOUS FOR AUDIO QUALITY

We came from the studio environment, so sound quality is in our DNA. Since 1976 we've been known for the quality of our audio starting with our world class voice processors. As pioneers in Open Architecture processing, we were one of the first companies to integrate audio over IP. Today, our world class DSPs and Control Systems continue the Symetrix tradition of excellence and craft.

### POWERFUL AND COMPLETE PROCESSING

Symetrix DSPs provide all the building blocks you need for virtually any audio application. With our powerful and flexible open-architecture DSPs, the choice of signal routings, DSP modules, and control signal processing are at the sole discretion of the programmer. This enables each and every system to perfectly align with specifications as well as to adapt and expand as requirements change. All classes of audio processing modules are provided including mixers, automixers, matrices, equalizers, filters, compressor/limiters, automatic gain controller (AGC), automatic ambient sound pressure level response (SPL Computer), and Feedback Fighter. Application-specific modules such as room combiners directly address complex and often challenging integration issues. Specialized processes like Acoustic Echo Cancellation (AEC) enhance intelligibility and make seamless multi-point conferencing possible. And custom designed logic or Lua scriptable Intelligent Modules allow extreme signal manipulation. App-based fixed architecture models bring our class-leading processing to smaller systems that need straightforward features with lightning fast setup.

### SYSTEM COMPATIBILITY

Symetrix makes it easy to design the best solution for any space. We give you the tools and the freedom to select and integrate the perfect microphone and loudspeaker solution to meet the needs of the room. And you can leverage Lua Scripting with Symetrix Intelligent Modules to control any PTZ camera.

### SCALABLE CONFERRING

From simple huddle spaces to those requiring dozens or hundreds of microphones, Symetrix hardware and software tools provide nearly infinite flexibility in networked digital audio routing and configurable control devices.

### CONTROL

With Symetrix, you're in control with out-of-the-box solutions. No other DSP platform offers simple, straightforward system control via iOS, Android, or popular computer browsers. Symetrix offers multiple ways to control a system from user friendly wall remotes, to desk or wall mounted touchscreens, and even BYOD control from wireless tablets or smart phones. All programmed within minutes. Take full control of your system with design, display and deployment of tailored user experiences and system control solutions that meet the needs of your unique application.



CONFERRING AND CORPORATE AV



HOUSE OF WORSHIP



HOSPITALITY



GOVERNMENT AND JUDICIAL



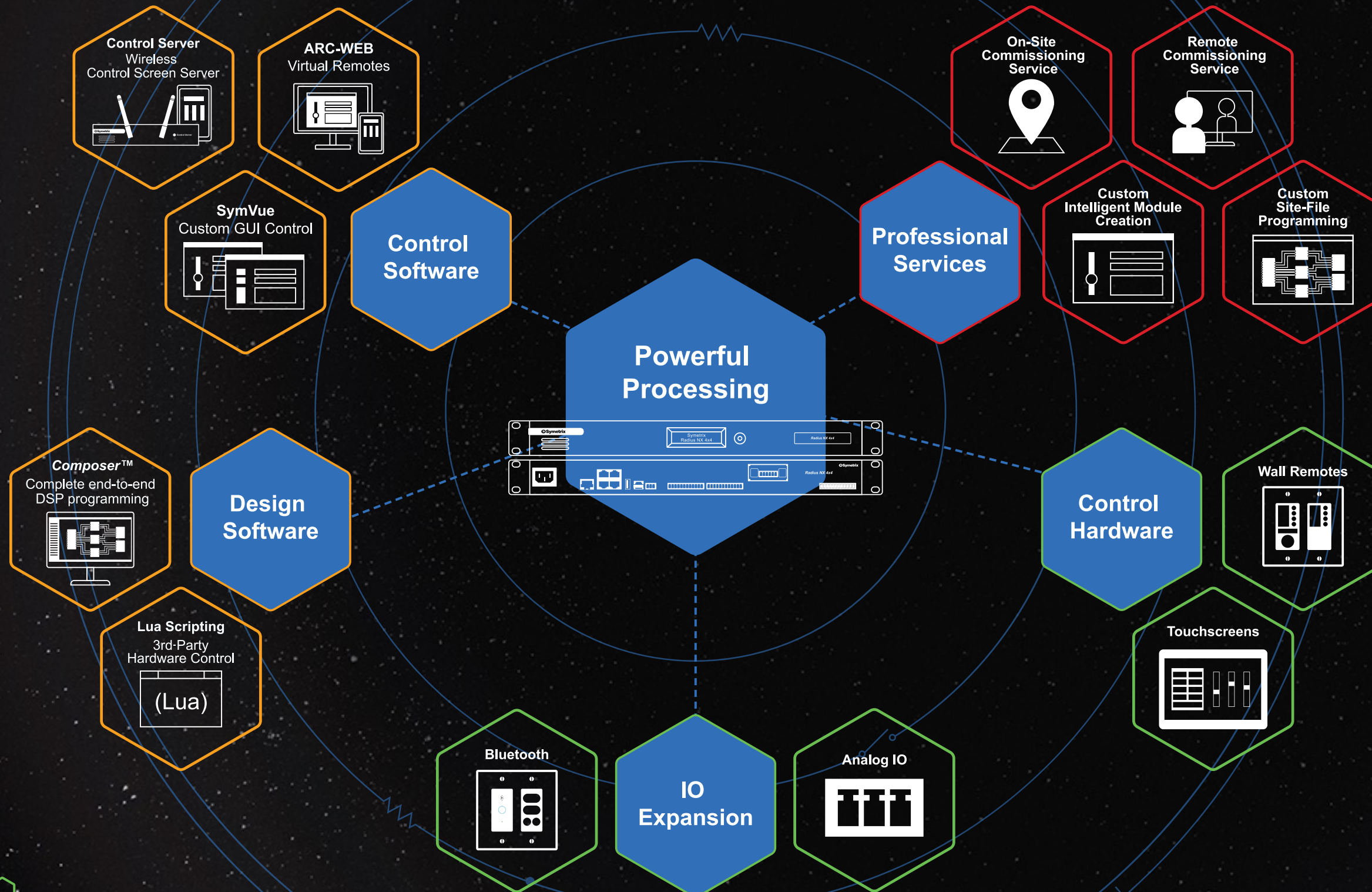
EDUCATION



RESTAURANTS

# Discover the Symetriverse

An Ever-Expanding Integrated Family of Control Solutions



## WHAT IS THE SYMETRIVERSE?

Symetrix offers an ever-expanding integrated family of control solutions known as the Symetriverse. The Symetriverse is an audio system that is comprised of DSPs, Control Software, Control Hardware, Design, IO Expanders and Accessories. The Big Bang that started it all happened in 1976 when Dane Butcher began creating audio products out of his recording studio. His mission was to deliver brilliant audio quality that was highly engineered and of broadcast quality. As a result of his ingenuity, he created products that were not only innovative but merged software and hardware to deliver high quality sound. This mindset continues today in the powerful processing power that can be seen in the Symetrix galaxy of highly engineered products.

## YOU'RE NOT ALONE IN THE SYMETRIVERSE

If you need product or technical support we've got you covered. Call or email our **Technical Support** team for assistance with troubleshooting, design reviews, commissioning and warranty support between the hours of 7:00 AM and 5:00 PM Pacific Time, Monday through Friday. Call 425-778-7728 or email us at [support@symetrix.co](mailto:support@symetrix.co).

We also offer fee-based **Symetrix Professional Services** that leverage the experience and knowledge of Symetrix Applications Engineers to provide engineering support for our customers' projects. **Symetrix Professional Services** include Site File Programming, Custom Intelligent Module Creation, and Remote or On-Site Commissioning.

To learn more about **Symetrix Professional Services** contact **Scott Wrege** at 858-344-7680 or [swrege@symetrix.co](mailto:swrege@symetrix.co).

If you have any sales related questions you can contact our Sales Team at [sales@symetrix.co](mailto:sales@symetrix.co)

DSP Hardware	
<b>Radius</b>	
Radius NX 4x4 • Powerful General Purpose DSP / Optional 128 Channel (64x64) Redundant Dante™ / On-board Ethernet & Dante™ Network Switches / 4 Analog mic/line inputs & 4 Analog Outputs / Up to 8x8 Channels of USB Audio / 1 I/O Expansion Card Slot / Internal Universal Input Supply / Accepts Radius NX AEC Coprocessor Module.	11
Radius NX 12x8 • Powerful General Purpose DSP / Optional 128 Channel (64x64) Redundant Dante™ / On-board Ethernet & Dante™ Network Switches / 12 Analog mic/line inputs & 8 Analog Outputs / Up to 8x8 Channels of USB Audio / 1 I/O Expansion Card Slot / Internal Universal Input Supply / Accepts Radius NX AEC Coprocessor.	11
<b>Edge</b>	
Edge • Powerful DSP Featuring Flexible Input/Output Configurations   Optional 128 Channel (64x64) Redundant Dante™   On-board Ethernet and Dante™ Network Switches   4 I/O Expansion Card Slots   Internal Universal Input Power Supply	13
<b>Radius and Edge Expansion Cards, and Radius NX Coprocessor Modules</b>	
4 Channel Analog Input Card • Optional Card Expands Mic/Line Input Capacity.	17
4 Channel Analog Output Card • Optional Card Expands Output Capacity.	17
4 Channel AEC Input Card • Optional Card Expands Input Capacity While Adding AEC Functionality.	17
4 Channel Digital Input Card • Optional Card Adds AES/EBU or S/PDIF Digital Input Capability.	17
4 Channel Digital Output Card • Optional Card Adds AES/EBU or S/PDIF Digital Output Capability.	17
2 Line Analog Telephone Interface Card • Optional Card Adds Analog (POTS) Capability.	17
2 Line VoIP Interface Card • Optional Card Adds Voice Over IP Capability.	17
USB Audio Card • Optional Card Adds USB Audio Capability.	17
Radius NX AEC-1 Coprocessor • Single Core AEC Coprocessor, up to 8 Channels (single reference), or up to 4 channels (independent references)	17
Radius NX AEC-2 Coprocessor • Dual Core AEC Coprocessor, up to 16 Channels (two references), or up to 8 channels (independent references)	17
<b>Prism</b>	
Prism 4x4 • DSP Identical to Radius, Edge, Solus NX   Optional 128 Channel (64x64) Redundant Dante™   4x4 Analog Input/Output   PoE+   1/2 Rack	19
Prism 8x8 • DSP Identical to Radius, Edge, Solus NX   128 Channel (64x64) Dante™   8x8 Analog Input/Output   External Universal Input Power Supply	19
Prism 12x12 • DSP Identical to Radius, Edge, Solus NX   128 Channel (64x64) Dante™   12x12 Analog Input/Output   External Universal Input Power Supply	19
Prism 16x16 • DSP Identical to Radius, Edge, Solus NX   128 Channel (64x64) Dante™   16x16 Analog Input/Output   External Universal Input Power Supply	19
<b>Jupiter   Zone Mix 761</b>	
Jupiter 4 • Programmed Using Free Turn-key Apps   4x4 Analog Input/Output   Standalone Operation   External Universal Input Power Supply	23
Jupiter 8 • Programmed Using Free Turn-key Apps   8x8 Analog Input/Output   Standalone Operation   External Universal Input Power Supply	23
Jupiter 12 • Programmed Using Free Turn-key Apps   12x4 Analog Input/Output   Standalone Operation   External Universal Input Power Supply	23
Zone Mix 761 • Turn-key Programming   Four Mic Inputs   Eight Audio Media Inputs   Six Zone Outputs   Optimized for Paging and Background Music Management	25
<b>Software</b>	
Composer™ • Programs Radius, Edge, and Prism Open-architecture DSPs and Accessories	43
SymVue • Composer™-based Authoring of End-User Graphic Interfaces   Exports Network Resident Control Screens for Windows PCs and Tablets	45
ARC-WEB • A Virtual User Interface to Symetrix DSP Embedded Web Servers   User Control of Presets, Volume, Mute and Source Selection from Smartphones, Tablets, and PCs	49
Jupiter Software • Downloadable Turn-Key Audio Processing   Over 70 Apps Covering Mixing and Routing, Public Address and Distribution, Sound Reinforcement, and Special Purpose Signal Processing	51
Zone Mix 761 Software • A Full-Featured Turn-Key Background Music and Paging Application   Familiar Hardware-like Layout   Ultra Fast Programming for Rapid Deployment	53

Accessories	
<b>Dante™-enabled Analog Input/Output Expanders</b>	
xIO Bluetooth • Single gang Bluetooth module with Dante. Available in US and EU form factors and in black and white.	29
xIO Bluetooth RCA-3.5mm • Single gang Bluetooth module with Dante. Available in US and EU form factors and in black and white.	29
xIn 4 • 4 Channel Analog Input Expander, 4 Channel Dante™ Transmit. For Use with Dante™-Enabled Symetrix DSPs. PoE. Software Controlled- No Mechanical Switches or Circuit Board Jumpers. Low Cost Solution.	31
xOut 4 • 4 Channel Analog Output Expander, 4 Channel Dante™ Receive. For Use with Dante™-Enabled Symetrix DSPs. PoE. Software Controlled- No Mechanical Switches or Circuit Board Jumpers. Low Cost Solution.	31
xIO 4x4 • 4 Channel Analog Input and Output Expander, 4 Channel Dante™ Transmit and Receive. For Use with Symetrix Dante™-Enabled DSPs. PoE. Software Controlled- No Mechanical Switches or Circuit Board Jumpers. Low Cost Solution.	31
xIO Stage 4x4 • 4 channel analog in/out expander, 4 channel Dante™ transmit and receive, PoE. Low Cost Solution.	31
xIn 12 • 12 Channel Analog Input Expander, 12 Channel Dante™ Transmit. For Use with Dante™-enabled Symetrix DSPs. Software Controlled- No Mechanical Switches or Circuit Board Jumpers. Low Cost Solution.	31
xOut 12 • 12 Channel Analog Output Expander, 12 Channel Dante™ Receive. For Use with Dante™-Enabled Symetrix DSPs. Software Controlled- No Mechanical Switches or Circuit Board Jumpers. Low Cost Solution.	31
<b>Remotes and Touchscreen Controls</b>	
W1 • IP/PoE based control. Features a push button encoder and display.	35
W2 • IP/PoE based control. Features four momentary buttons and display.	35
W3 • IP/PoE based control. Features a push button encoder, four buttons, and display.	35
W4 • IP/PoE based control. Remote with push button encoder, eight buttons, and display. US dual-gang only	35
ARC-3 • Wall Panel Controller with Graphical Menu.	37
ARC-2e • Wall Panel Controller with Text Menu.	37
ARC-K1e • Wall Panel Controller with Rotary Encoder.	37
ARC-SW4e • Wall Panel Controller with Push-buttons.	37
ARC-EX4e • Wall Panel Controller with Push-buttons.	37
RC-3 • Wall Panel Controller with Analog Potentiometer.	37
ARC-PSe • ARC Wall Panels Power Supply. 1/2 Rack. Distributes Power and Data to Multiple ARC Wall Panels Via Eight RJ-45 Connectors Over Long Distances. Mounting Hardware Sold Separately.	37
T-5 Glass Touchscreen • End User Control of Symetrix DSPs. 5" High Resolution Touchscreen Controller. Flexible and Extensible.	39
T-10 Glass Touchscreen • End User Control of Symetrix DSPs. 10" High Resolution Touchscreen Controller. Flexible and Extensible.	39
<b>Control Server and Control Expander</b>	
xControl • External Control Expander, 1/2 Rack, PoE. Mounting Hardware Sold Separately.	41
Control Server • BYOD Network-based A/V Control Platform, 1/2 Rack, Mounting Hardware Sold Separately.	41
Control Server Apps • SymVue for Control Server / Mixer for Control Server	39
<b>Mounting Hardware and Cables</b>	
1/2 U Filler Panel • Filler Panel Used with 19" 1U Rack Tray.	55
1/2 U Surface Mount Bracket • Bracket for Surface-mounting Half-rack Units.	55
1 U Rack Tray • 19" Rack Tray for Rack Mounting of Half-rack Units.	55
RCA to Euroblock Cable • Adapter Cable for Consumer Devices like CDs and DVD Players.	55
3.5 mm TRS Mini to Euroblock Cable • Adapter Cable for Consumer Devices like MP3 Players.	55
T-5 Table Mount Stand • Table mount for original T-5 Touchscreen controller.	39
T-10 Table Mount Stand • Table mount for original T-10 Touchscreen controller.	39

# Flexible, Powerful, Solutions

## WHY USE SYMETRIX DSP'S?

We offer flexible, powerful solutions for your AV installations. Let us help you select the digital signal processing (DSP) that is just right for your needs. Our hardware and software solutions can be scaled to fit any size application.

Symetrix has been supplying superior, quality products for over 45 years. Symetrix products deliver great sound quality, are built to last and offer a variety of options. Our products give you full control with an out-of-the-box solution and make networking flexible and easy. Our system of products are also compatible with 3rd-party products and easy-to-install.

Symetrix brings seamless unified communications and system control to any inspired workspace or digital workplace. Our mission is to reduce the complexity of your system by increasing the value of your signal processor and to eliminate the need for any unnecessary hardware and programming.

## WHICH DSP IS RIGHT FOR MY INSTALLATION?

If you are wondering which DSP is right for your installation, use the diagram to right to help walk you through the product selection process.

## STILL HAVE QUESTIONS?

Call 425-778-7728 or email us at [support@symetrix.co](mailto:support@symetrix.co).



# Radius NX Flagship DSP

## Radius NX

### PRODUCT OVERVIEW

Radius NX is the flagship of the Symetrix DSP series, with all the features needed for any application. While perfectly suited to conferencing with optional AEC and built in USB, its flexible card slot and expandability via Dante make it the perfect building block for any application.

### COMMON SELLING POINTS

- Two models: Radius NX 4x4 and Radius NX 12x8
- 1x I/O Expansion Card slots supports Analog In, Analog Out, Digital In, Digital Out, AEC, USB, VoIP or Analog Telco cards
- Full Featured Open Architecture DSP Engine
- Optional 64x64 Redundant Dante
- Optional 8 or 16 channel AEC coprocessor module
- USB audio port enables computer-based soft-codec conferencing or 8 channels of multitrack recording and playback
- USB host port supports 8 channels of audio recording and playback
- Dedicated routing and processing resources for a 128x128 Super Matrix
- Embedded web server provides remote metering, diagnostics and configurable ARC-WEB browser control.
- Extensive control options via SymVue for Windows, T Series Touchscreens, Control Server, ARC remotes, W Series remotes, ARC-WEB, TCP/UDP
- 3rd-Party Control via Intelligent Modules with Lua Scripting
- Microsoft Teams Compatible

### TWO MODELS

Radius NX 4x4 (4 analog inputs, 4 analog outputs) and Radius NX 12x8 (12 analog inputs, 8 analog outputs). Both feature optional factory installed 64x64 redundant Dante and identical DSP resources. The two differ only in analog I/O, logic output, and external control input capacity. The reduced cost of the 4x4 makes it extremely competitive in applications where many Dante endpoints are routed to a primary DSP and fewer analog connections are required. Models without Dante provide even more accessible DSP pricing for smaller systems.

### OPTIONAL USER INSTALLED VIRTUALIZED AND SCALABLE AEC COPROCESSOR MODULE

For conferencing applications the dual-core coprocessor provides up to 16 channels of full bandwidth AEC with unparalleled clarity and intelligibility.

### USB AUDIO PORT

Enables soft-codec conferencing and computer-based multitrack recording or playback.

### USB HOST PORT

Supports recording, audio media playback, and digital messaging.

### 128x128 SUPER MATRIX

Next-generation SHARC Dual-core Processor enables a Composer Super Matrix – placing the burden of large matrices in one core while freeing the second core for general purpose signal processing – making it possible to design very large and complex systems around a single Radius NX. View modes make navigating through large matrices a breeze.

### CONFIGURABLE 4-PORT GIGABIT SWITCH

Serves both Dante (when installed) and control networks, eliminating or reducing the need for external switches while avoiding 100 Mbps bottlenecks.

### ULTRA-LOW NOISE PREAMPS

Digitally controlled 3 dB steps facilitate precise gain setting resulting in unmatched sound quality.

### OPTION CARD SLOT

Accepts all user installed Radius and Edge Expansion Cards, maximizing Radius NX input/output counts or adding special purpose functionality to reduce total system cost.



# Edge The Ultimate in Flexibility

## Edge

### PRODUCT OVERVIEW

The Edge Digital Signal Processor, is all about flexibility. With 4 card slots and a wide option of user installable cards, Edge is the go-to DSP when you need a very specific combination of features and nothing else will work.

### COMMON SELLING POINTS

- Powerful DSP with Flexible Card-Based I/O Configuration
- Full Featured Open Architecture DSP Engine
- 4x I/O Expansion Card slots supports Analog In, Analog Out, Digital In, Digital Out, AEC, USB, VoIP or Analog Telco cards
- Optional 64x64 Redundant Dante
- Embedded web server provides remote metering, diagnostics and configurable ARC-WEB browser control.
- Extensive control options via SymVue for Windows, T Series Touchscreens, Control Server, ARC remotes, W Series remotes, ARC-WEB, TCP/UDP
- 3rd-Party Control via Intelligent Modules with Lua Scripting
- Microsoft Teams Compatible when equipped with optional USB I/O Card

### TOTAL INPUT/OUTPUT FLEXIBILITY

When a preconfigured DSP just won't do, Edge provides four versatile optional card slots enabling unique I/O configurations – aligning the hardware with the exact system requirements. Optional cards support analog and AES-3 digital I/O as well as special purpose interfaces including USB, AEC, VoIP, and analog telephone.

### DANTE IN OUR DNA

Edge DSPs can be equipped with an optional factory installed 64x64 redundant Dante channels. The Dante protocol enables ultra-reliable multi-channel audio networking over IP. Together, Symetrix and Dante provide the fastest possible way to implement, control, and maintain a system of networked DSPs and accessories – including third party Dante-enabled microphones, loudspeakers, power amps, and mixing consoles. And an option without Dante provides even more accessible DSP pricing for standalone systems.

### ON-BOARD GIGABIT SWITCH

Unique to Symetrix Radius NX and Edge DSPs, built-in switches lower system cost, reduce or eliminate the need for peripheral switches, and increase system reliability.

### UNLIMITED PROGRAMMING FLEXIBILITY

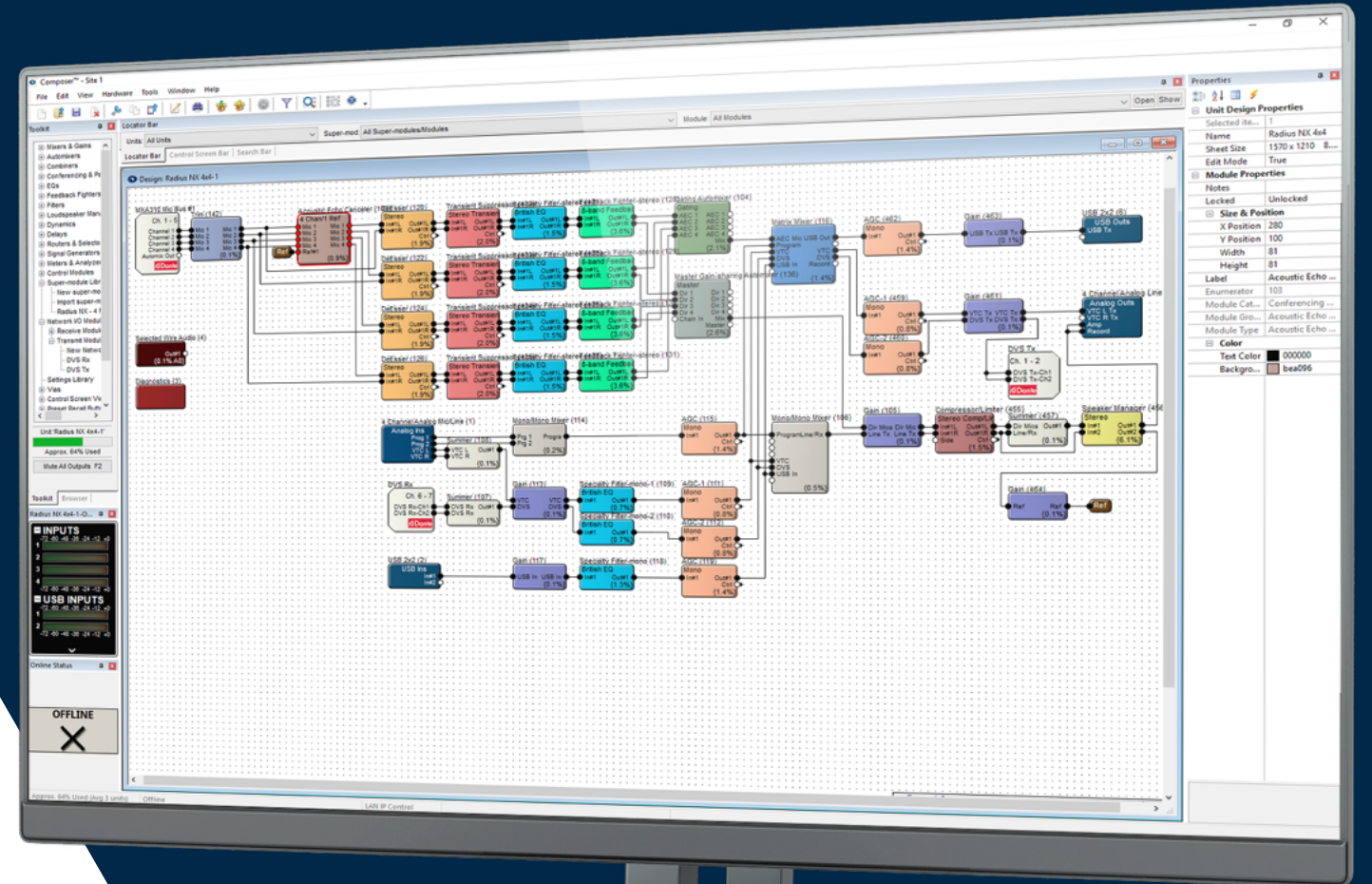
Edge is programmed using Composer™ – Symetrix's award-winning open-architecture CAD application. Unique to Composer is the ability to natively configure Symetrix and select third-party Dante hardware – thereby eliminating the confusion of multiple or redundant software applications.

### CONTROL MADE EASY

Multiple control options include low-cost Symetrix ARC wall panels and an easy-to-generate SymVue Windows virtual GUI. The human readable Composer Control Protocol supports programming of third-party touch screens and control devices.

### AN EMBEDDED WEB SERVER FOR STATUS AND EVEN MORE CONTROL

Edge's embedded web server displays I/O levels, diagnostics data, and hosts ARC-WEB – a browser-based interface for smart phones, tablets, and computers.





# Hardware

## Radius NX 4x4

### Flagship, Full Featured and Flexible DSP

#### Product Highlights

- Full Featured Open Architecture DSP Engine
- 4 mic/line inputs
- 4 line outputs
- Ultra-low noise Symetrix preamps with 3 dB gain steps
- 1x I/O Expansion Card slots
- 4x4 GPIO
- RS232 Control Terminal Blocks
- ARC Remote Port
- Optional 64x64 Redundant Dante
- Optional 8 or 16 channel AEC coprocessor module
- USB Audio port enables computer-based soft-codec conferencing or 8 channels of multitrack recording and playback
- USB host port supports 8 channels of audio recording and playback
- Dedicated routing and processing resources for a 128x128 Super Matrix

- Dual Dante and dual Ethernet ports
- Front panel LCD displays configuration, system status and audio levels
- Internal Power Supply

#### Compliance

- UL 60065, cUL 60065, IEC 60065, EN 55103-2, EN55032, EN 61000-3-2, EN 61000-3-3, ICES-003, FCC Part 15 (all Class A), RoHS



Radius NX 4x4 Dante + USB-B Part Number	80-0144
Radius NX 4x4 + USB-B Part Number	80-0205

Radius 4x4 Dante (swap to USP Depop) Part Number	80-0197
Radius 4x4 Non-Dante Part Number	80-0196

## Radius NX 12x8

### Flagship, Full Featured and Flexible DSP

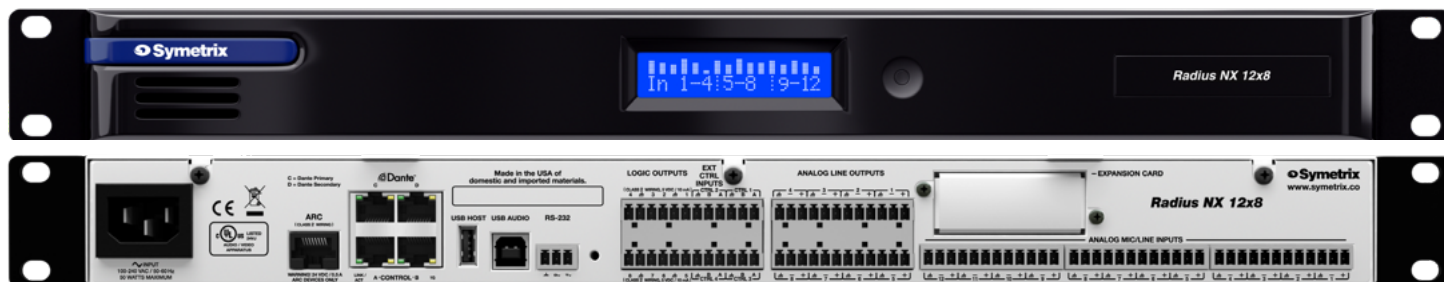
#### Product Highlights

- Full Featured Open Architecture DSP Engine
- 12 mic/line inputs
- 8 line outputs
- Ultra-low noise Symetrix preamps with 3 dB gain steps
- 1x I/O Expansion Card slots
- 8x8 GPIO
- RS232 Control Terminal Blocks
- ARC Remote Port
- Optional 64x64 Redundant Dante
- Optional 8 or 16 channel AEC coprocessor module
- USB Audio port enables computer-based soft-codec conferencing or 8 channels of multitrack recording and playback
- USB host port supports 8 channels of audio recording and playback
- Dedicated routing and processing resources for a 128x128 Super Matrix

- Dual Dante and dual Ethernet ports
- Front panel LCD displays configuration, system status and audio levels
- Internal Power Supply

#### Compliance

- UL 60065, cUL 60065, IEC 60065, EN 55103-2, EN55032, EN 61000-3-2, EN 61000-3-3, ICES-003, FCC Part 15 (all Class A), RoHS



Radius NX 12x8 Dante + USB-B Part Number	80-0134
Radius NX 12x8 + USB-B Part Number	80-0206

Radius 12x8 Dante (swap to USP Depop) Part Number	80-0199
Radius 12x8 Non-Dante Part Number	80-0198

## Radius NX AEC Coprocessors

#### Radius NX AEC-1 Coprocessor

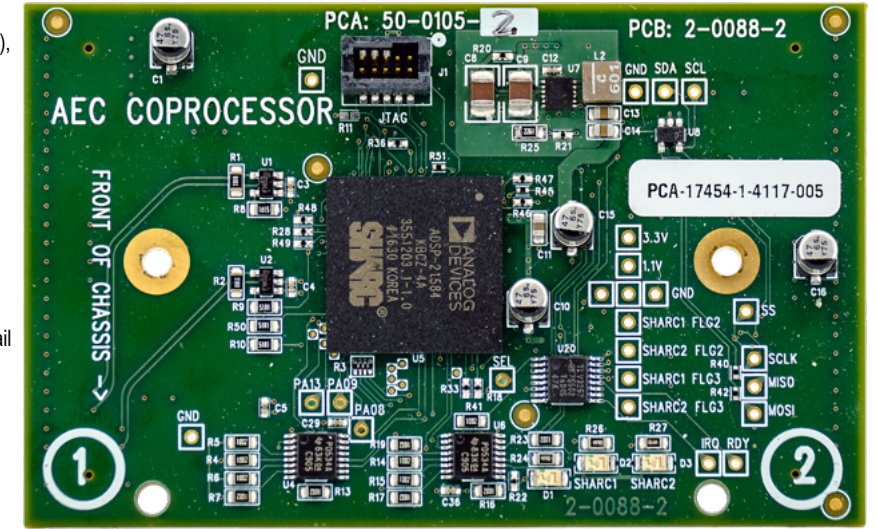
- Single Core AEC Coprocessor, up to 8 Channels (single reference), or up to 4 channels (independent references)
- Wideband processing, industry low 11 mS latency, up to 300 mS tail length, and greater than 100 dB/S convergence time.
- Parameter control includes input gain with metering, trim, mute, AEC, noise cancellation, nonlinear processing, and AGC (Automatic Gain Control)

#### Radius NX AEC-2 Coprocessor

- Dual Core AEC Coprocessor, up to 16 Channels (two references), or up to 8 channels (independent references)
- Wideband processing, industry low 11 mS latency, up to 300 mS tail length, and greater than 100 dB/S convergence time.
- Parameter control includes input gain with metering, trim, mute, AEC, noise cancellation, nonlinear processing, and AGC (Automatic Gain Control)

#### Compliance

- RoHS



Radius NX AEC-1 Coprocessor | 80-0152

Radius NX AEC-2 Coprocessor | 80-0153

## Edge

### Powerful DSP with Flexible Card Based I/O Configuration I/O

#### Product Highlights

- 4x I/O Expansion Card slots
- 8x8 GPIO
- RS232 Control Terminal Blocks
- ARC Remote Port
- Optional 64x64 Redundant Dante
- Dual Dante and dual Ethernet ports
- Embedded web server provides remote metering, diagnostics and configurable ARC-WEB browser control.
- Extensive control options via SymVue for Windows, T Series Touchscreens, Control Server, ARC remotes, W Series remotes, ARC-WEB, TCP/UDP
- Front panel LCD displays configuration and system status, with dedicated LED audio meters and assignable controls
- Support for redundant Internal and External Power Supplies

#### Compliance

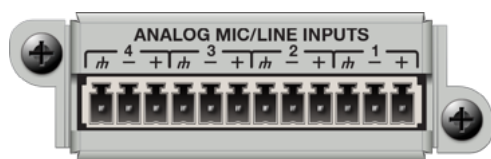
- UL 60065, cUL 60065, IEC 60065, UL 60065, cUL 60065, IEC 60065, EN 55103-1, EN 55103-2, EN55032, FCC Part 15, ICES-003, RoHS



Edge Frame Dante Part Number | 80-0048

Edge Frame Non-Dante Part Number | 80-0204

## 4 Channel Analog Input Card

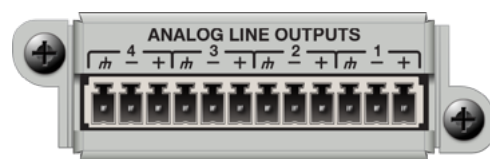


Part Number 80-0062

### 4 Channel Analog Input Card

- Expands analog input capacity of Radius NX and Edge DSPs
- Mic and/or line level inputs
- +48v phantom power @10mA
- Signal matching. 5 analog gain settings with +/-24dB of digital trim
- Extended dynamic range A/D converters. >115 dB
- 3.81mm terminal blocks, 12 position plugs with strain relief pull tabs
- Field swappable by qualified technicians

## 4 Channel Analog Output Card

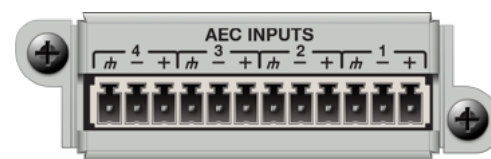


Part Number 80-0063

### 4 Channel Analog Output Card

- Expands analog output capacity of Radius NX and Edge DSPs
- High output levels for long cable runs, up to +24 dBu
- Digital trim, +12dB to full off
- Extended dynamic range D/A converters, >117 dB
- 3.81mm terminal blocks, 12 position plugs with strain relief pull tabs
- Field swappable by qualified technicians

## 4 Channel AEC Input Card

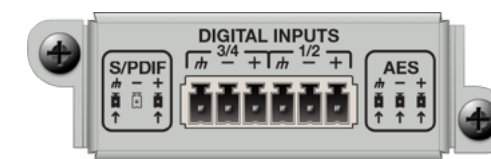


Part Number 80-0064

### 4 Channel AEC Input Card

- Adds AEC functionality to Radius NX and Edge DSPs
- Wideband processing, industry low 11 mS latency, up to 300 mS tail length, and greater than 100 dB/S convergence time
- Zero-latency direct outputs and discrete reference inputs per AEC channel
- Processing via the card's mic/line inputs or from internally routed sources
- Parameter control includes input gain with metering, trim, mute, AEC, noise cancellation, nonlinear processing, and AGC (Automatic Gain Control)
- Field swappable by certified technicians

## 4 Channel Digital Input Card

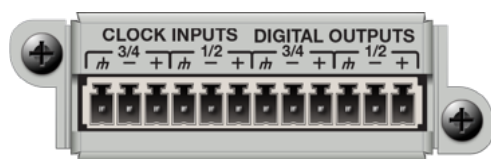


Part Number 80-0067

### 4 Channel Digital Input Card

- Adds pro or consumer (AES3 or S/PDIF) digital inputs to Radius NX, and Edge DSPs
- 4 channels (2 stereo pairs)
- Sample rate conversion of 12 to 192 kHz input signal to 48k internal clock
- +/-24dB trim
- Parameter control includes metering, trim, mute and signal inversion
- Field swappable by qualified technicians

## 4 Channel Digital Output Card

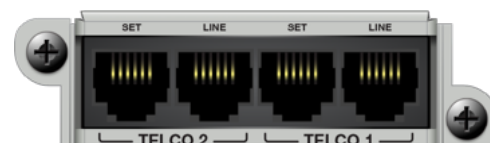


Part Number 80-0068

### 4 Channel Digital Output Card

- Adds pro or consumer (AES3 or S/PDIF) digital outputs to Radius NX and Edge DSPs
- 4 channels (2 stereo pairs)
- Parameter control includes output trim with metering, +/- 12dB to full off.
- Output sample rate defaults to 48kHz or can be externally clocked from 12 to 192kHz
- Field swappable by certified technicians

## 2 Line Analog Telephone Interface Card



Part Number 80-0066

### 2 Line Analog Telephone Interface Card

- Adds 2-line PSTN (POTS) functionality to Radius NX and Edge DSPs
- Multiple applications – teleconferencing, paging, remote monitoring, and broadcast
- Functionality includes auto-answer, dial, redial, speed-dial, do not disturb, DTMF decode, caller ID, progress monitoring, line status and faults monitoring and more
- A variety of control options including PSTN telephones, SymVue and third-party control devices support intuitive end-user operation
- Standard RJ11 ports with parallel connections per line for a physical handset, dialer, or ADA compliant visual or audible device
- Qualified for use in North America only
- Field swappable by qualified technicians

## 2 Line VoIP Interface Card

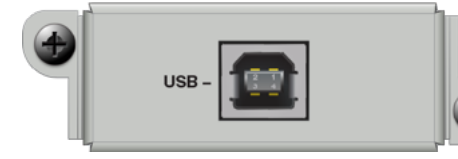


Part Number 80-0065

### 2 Line VoIP Interface Card

- Adds 2-line VoIP functionality to Radius NX and Edge DSPs
- Natively integrates with Cisco, AVAYA, and Asterisk SIP-based call platforms.
- Supports both narrow and wide-band audio codecs
- Capable of a broad range of telephony functions including dial, hold, resume, transfer, do not disturb, and conference
- Secure setup access from both AV and VoIP LANs lends support to both IT/VoIP administrators and AV integrators
- SymVue application builder and extensive third-party support enable rapid development of application specific user interfaces
- 2 independent SIP registrations enable 2 simultaneous and independent calls per card
- Field swappable by qualified technicians

## USB Audio Card



Part Number 80-0132

### USB Audio Card

- Adds up to 16 channels of USB audio I/O to Radius NX and an Edge DSP
- Distinct modes of operation including two speakerphone modes for conferencing, along with a 2x2 and 8x8 line I/O mode for multitrack recording and playback
- Speakerphone and 2x2 line modes are class 1 USB (driverless) for quick and problem free plug-and-play connectivity and provide the ability to utilize a soft codec's AEC or disable it in favor of Symmetrix' award-winning AEC
- 8x8 line I/O mode utilizes Class 2 USB. Windows ASIO driver are included
- A high-retention Type B USB connection provides a standard direct connection between DSP and computer
- Field swappable by qualified technicians

# Prism Flexible DSPs, Scalable to Fit Your Needs

## Prism

### PRODUCT OVERVIEW

Symetrix's Prism open Architecture DSPs are the workhorse of any system and meet the needs of many common applications. Available in a variety of common channel configuration and with both Dante and non-Dante™ options, there is a Prism perfect for your application, without spending on unneeded features.

### COMMON SELLING POINTS

- DSP Price / Performance Breakthrough
- 4x4, 8x8, 12x12 and 16x16 Models
- Full Featured Open Architecture DSP Engine
- Optional 64x64 Dante
- Embedded web server provides remote metering, diagnostics and configurable ARC-WEB browser control
- Extensive control options via SymVue for Windows, T Series Touchscreens, Control Server, ARC remotes, W Series remotes, ARC-WEB, TCP/UDP
- 3rd-Party Control via Intelligent Modules with Lua Scripting

### FLEXIBLE IO COMBINATIONS

The Prism family scales from the smallest 4x4 to the largest 16x16, providing the perfect amount of class-leading Symetrix quality IO for any installation.

### DANTE™ IN OUR DNA

Prism DSPs are equipped with optional factory installed 64x64 Dante channels. The Dante protocol enables ultra-reliable multi-channel audio networking over IP. Together, Symetrix and Dante provide the fastest possible way to implement, control, and maintain a system of networked DSPs and accessories – including third party Dante-enabled microphones, loudspeakers, power amps, and mixing consoles. Models without Dante provide even more accessible DSP pricing for smaller systems.

### SCALING UP

A Prism system's analog input and output count may be increased using Symetrix Dante-enabled xIn 4, xIO 4x4, xOut 4, xIn 12, and xOut 12 analog I/O expanders.

### UNLIMITED PROGRAMMING FLEXIBILITY

Prism is programmed using Composer – Symetrix's award winning open-architecture CAD application. Unique to Composer is the ability to natively configure Symetrix and select third party Dante hardware – thereby eliminating the confusion of multiple or redundant software applications.

### CONTROL MADE EASY

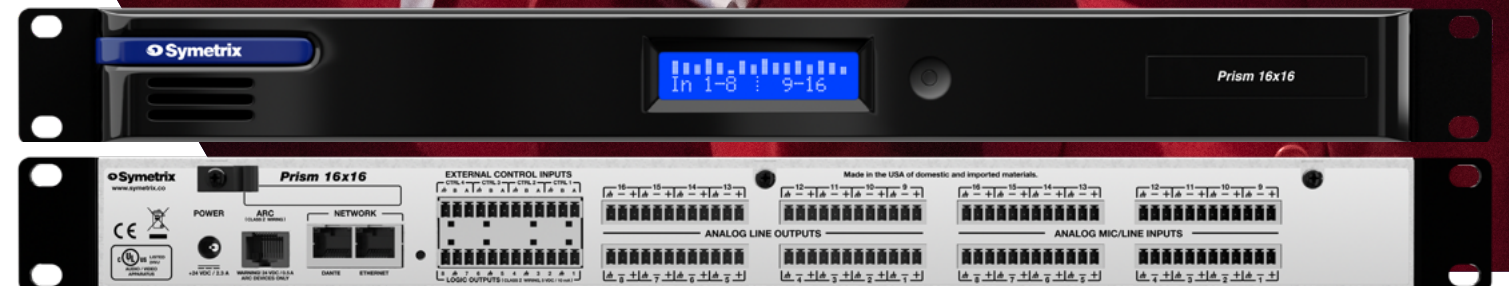
Multiple control options include low-cost Symetrix ARC wall panels and an easy-to-generate SymVue Windows virtual GUI. The human readable Composer Control Protocol supports programming of third-party touch screens and control devices.

### AN EMBEDDED WEB SERVER FOR STATUS AND EVEN MORE CONTROL

Prism's embedded web server displays I/O levels, diagnostics data, and hosts ARC-WEB – a browser-based interface for smart phones, tablets, and computers.

### FORM, FIT AND FUNCTION

Prism 8x8, 12x12 and 16x16 have been designed using standard 19" x 1U enclosures. For convenient point-of-use or rack mounting, Prism 4x4 features 1/2 rack 1U form factor. (Surface and rack mount kits sold separately.)



“ I find Symetrix products easy-to-use, yet have the complexity to address all our needs at the same time.”

**Brian Webber**  
Install Tech and Programmer  
Sacramento Production Services

## Prism 4x4

### Product Highlights

- Full Featured Open Architecture DSP Engine
- 4 mic/line inputs
- 4 line outputs
- High Performance Symetrix preamps
- 4x4 GPIO
- ARC Remote Port
- Optional 64x64 Dante
- Dedicated Dante and Ethernet ports
- Embedded web server provides remote metering, diagnostics and configurable ARC-WEB browser control
- Extensive control options via SymVue for Windows, T Series Touchscreens, Control Server, ARC remotes, W Series remotes, ARC-WEB, TCP/UDP
- Front panel LCD displays configuration, system status and audio levels

## DSP Price / Performance Breakthrough

- Compact 1/2 rack format. Rack and surface mount kits sold separately
- Powered via PoE+. PoE+ injector included

### Compliance

- UL 60065, cUL 60065, IEC 60065, EN 55032, EN 55103-2, EN 61000-3-2, EN 61000-3-3, FCC Part 15, ICES-003, RoHS



Prism 4x4 Dante Part Number 80-0114 Prism 4x4 Part Number 80-0200

## Prism 8x8

### Product Highlights

- Full Featured Open Architecture DSP Engine
- 8 mic/line inputs
- 8 line outputs
- High Performance Symetrix preamps
- 8x8 GPIO
- ARC Remote Port
- Optional 64x64 Dante
- Dedicated Dante and Ethernet ports
- Embedded web server provides remote metering, diagnostics and configurable ARC-WEB browser control
- Extensive control options via SymVue for Windows, T Series Touchscreens, Control Server, ARC remotes, W Series remotes, ARC-WEB, TCP/UDP

## DSP Price / Performance Breakthrough

- Front panel LCD displays configuration, system status and audio levels
- External Power Supply

### Compliance

- UL 60065, UL 62386-1, cUL 62386-1, cUL 60065, IEC 60065, IEC 62386-1, EN 55032, EN 55103-2, EN 61000-3-2, EN 61000-3-3, FCC Part 15, ICES-003, RoHS



Prism 8x8 Dante Part Number 80-0115 Prism 8x8 Part Number 80-0201

## Prism 12x12

### Product Highlights

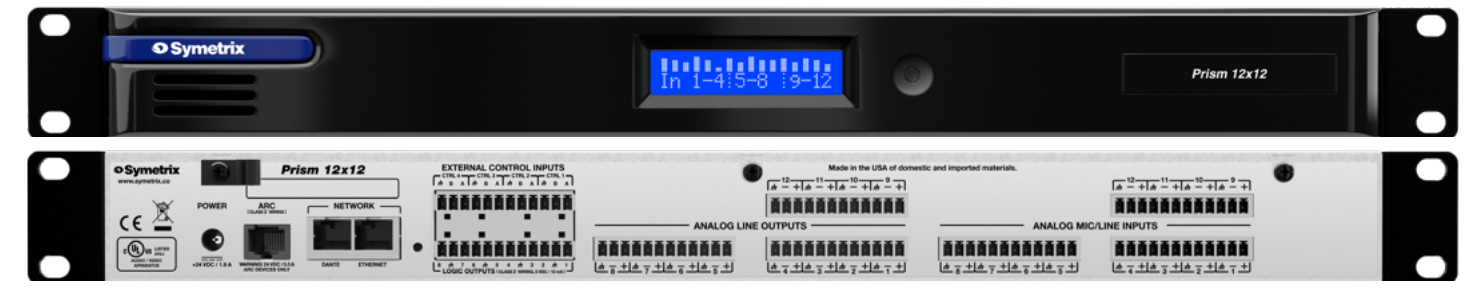
- Full Featured Open Architecture DSP Engine
- 12 mic/line inputs
- 12 line outputs
- High Performance Symetrix preamps
- 8x8 GPIO
- ARC Remote Port
- Optional 64x64 Dante
- Dedicated Dante and Ethernet ports
- Embedded web server provides remote metering, diagnostics and configurable ARC-WEB browser control
- Extensive control options via SymVue for Windows, T Series Touchscreens, Control Server, ARC remotes, W Series remotes,

## DSP Price / Performance Breakthrough

- ARC-WEB, TCP/UDP
- Front panel LCD displays configuration, system status and audio levels
- External Power Supply

### Compliance

- UL 60065, UL 62386-1, cUL 62386-1, cUL 60065, IEC 60065, IEC 62386-1, EN 55032, EN 55103-2, EN 61000-3-2, EN 61000-3-3, FCC Part 15, ICES-003, RoHS



Prism 12x12 Dante Part Number 80-0116 Prism 12x12 Part Number 80-0202

## Prism 16x16

### Product Highlights

- Full Featured Open Architecture DSP Engine
- 16 mic/line inputs
- 16 line outputs
- High Performance Symetrix preamps
- 8x8 GPIO
- ARC Remote Port
- Optional 64x64 Dante
- Dedicated Dante and Ethernet ports
- Embedded web server provides remote metering, diagnostics and configurable ARC-WEB browser control
- Extensive control options via SymVue for Windows, T Series Touchscreens, Control Server, ARC remotes, W Series remotes, ARC-WEB, TCP/UDP

## DSP Price / Performance Breakthrough

- Front panel LCD displays configuration, system status and audio levels
- External Power Supply

### Compliance

- UL 60065, UL 62386-1, cUL 62386-1, cUL 60065, IEC 60065, IEC 62386-1, EN 55032, EN 55103-2, EN 61000-3-2, EN 61000-3-3, FCC Part 15, ICES-003, RoHS



Prism 16x16 Dante Part Number 80-0117 Prism 16x16 Part Number 80-0203

# Jupiter Fast and Flexible App-Based Configuration

## Jupiter

### PRODUCT OVERVIEW

The Jupiter Digital Signal Processor is designed for speed. Bringing the best of fixed architecture ease of use, and flexible app-based configurations, systems can be configured with unmatched speed and without any limitations. Simply choose the app to meet the application's needs and customize the parameters as needed with its beautiful and easy-to-use software.

### COMMON SELLING POINTS

- Innovative and unique Turn-key DSP covers a wide range of applications
- App-based programming minimizes the learning curve and slashes installation costs
- 4x4, 8x8 and 12x4 Models
- Flexible, Fixed Architecture DSP with 85 preconfigured apps support applications requiring zone mixing, paging, automixing, routing, public address, music distribution, sound reinforcement, and more
- Embedded web server provides remote metering, diagnostics and configurable ARC-WEB browser control
- Flexible user control via ARC remotes, ARC-WEB, TCP/UDP
- Help is built in with connection and remote control wizards

### INNOVATIVE AND UNIQUE

Jupiter packages powerful DSP into a zero learning curve, turn-key family of audio processors. Standing on the shoulders of Symetrix' world-class open architecture DSP platforms, Jupiter upholds our commitment to pristine sound.

### 3 AUDIO INPUT/OUTPUT CONFIGURATIONS

Jupiter 4 (4 in, 4 out), Jupiter 8 (8 in, 8 out), and Jupiter 12 (12 in, 4 out).

### HIGH FEATURE TO COST RATIO

Near-zero programming time slashes installation costs.

### 85 TURN-KEY APPS

Categories include mixing and routing, public address / distribution, sound reinforcement, special purpose DSP. Signal routings, whether simple or complex, are fully tested and ready to go right out of the box.

### CONTROL MADE EASY

Multiple control options include low-cost Symetrix ARC wall panels and an easy-to-generate SymVue Windows virtual GUI. The human readable Composer Control Protocol supports programming of third-party touch screens and control devices.

### AN EMBEDDED WEB SERVER FOR STATUS AND EVEN MORE CONTROL

Jupiter's embedded web server hosts ARC-WEB – a browser-based interface for smart phones, tablets, and computers.

### INCREDIBLE SOUND

An abundance of DSP resources that power apps that are packed with features like dynamics, EQ, FIR filters, feedback fighters, loudspeaker management, automixing, and matrixing.

### HELP IS BUILT IN

The software connection wizard provides fast and easy IP linking to the DSP hardware.



“Symetrix products are easy for the customers to use and are easy to customize and program for the client's specific needs. Symetrix is rock solid and is our go to whenever we start specifying a system.”

Danny Salinas  
President  
AlleyCat AV

Symetrix Digital Signal Processors

# Zone Mix 761 DSP for Paging and Background Music Control

## Zone Mix 761

### PRODUCT OVERVIEW

The Zone Mix 761 Digital Signal Processor is the fixed architecture solution designed for applications needing playback from music and TV audio with paging support. Zone Mix is tailor made for Bars and Restaurants.

### COMMON SELLING POINTS

- Turn-key DSP for zone mixing, paging and background music control
- Simple programming minimizes the learning curve and slashes installation costs
- Fixed-Architecture DSP featuring a full complement of world-class processing including EQ, dynamics, feedback elimination, paging, ducking, ambient noise sensing and loudspeaker management
- 4 mic/line inputs for paging from up to 3 locations plus emergency page
- 8 stereo audio/media inputs and 6 line outputs
- Ethernet port for programming with Zone Mix 761 software for Windows
- Embedded web server provides remote metering, diagnostics and configurable ARC-WEB browser control
- Flexible user control via ARC remotes, ARC-WEB, TCP/UDP
- Help is built in with connection and remote control wizards

### A COST EFFECTIVE DSP FOR PAGING AND BACKGROUND MUSIC CONTROL

Paging into 6 zones from 3 microphone locations, plus emergency page, with automatic ducking and priority arbitration.

### TURN-KEY MEANS SYMETRIX DID THE HARD WORK

Plenty of inputs and outputs, the right kind of connectors, and a pre-designed GUI make for lightning fast deployment.

### MORE THAN ENOUGH DSP

All twelve input and six output channels feature a full complement of processing including: dynamics, feedback elimination, ambient noise sensing, EQ, and loudspeaker management resulting in a world-class audio experience.

### COMPREHENSIVE EXTERNAL CONTROL OPTIONS

ARC wall panels, ARC-WEB, and/or 3rd party touch-screens via RS-232 or UDP/IP.

### AN EMBEDDED WEB SERVER FOR STATUS AND EVEN MORE CONTROL

Zone Mix 761's embedded web server hosts ARC-WEB – a browser-based interface for smart phones, tablets, and computers.

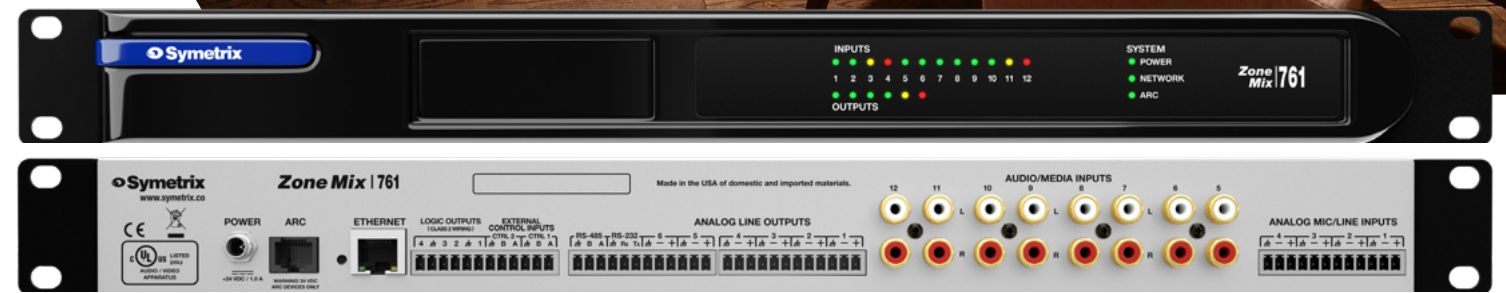
### HELP IS BUILT IN

The software connection wizard provides fast and easy IP linking to the DSP hardware. The external control wizard guides effortless programming of multiple user control devices.



“Symetrix products are reliable and that’s why we specify them in our systems. The engineering team has the capacity to design complex TV and music systems that are specific to each client.”

**Seth Howard**  
Director of Operations  
Audio Video Exclusives



## Jupiter 4

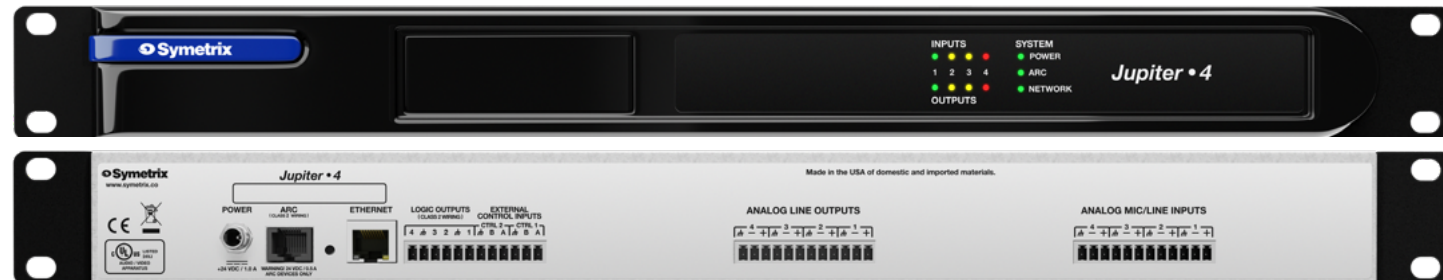
### Powerful Application-Based Turn-key DSP

#### Product Highlights

- Flexible Fixed Architecture DSP with 85 preconfigured apps
- 4 mic/line inputs
- 4 line outputs
- High Performance Symetrix preamps
- 4x4 GPIO
- ARC Remote Port
- Ethernet port for programming with Jupiter software for Windows
- Embedded web server provides remote metering, diagnostics and configurable ARC-WEB browser control
- Flexible user control via ARC remotes, ARC-WEB, TCP/UDP
- Dedicated front panel LEDs display audio levels and system status
- External Power Supply

#### Compliance

- UL 60065, cUL 60065, IEC 60065, EN 55103-1, FCC Part 15, RoHS



Jupiter 4 Part Number 80-0043

## Jupiter 12

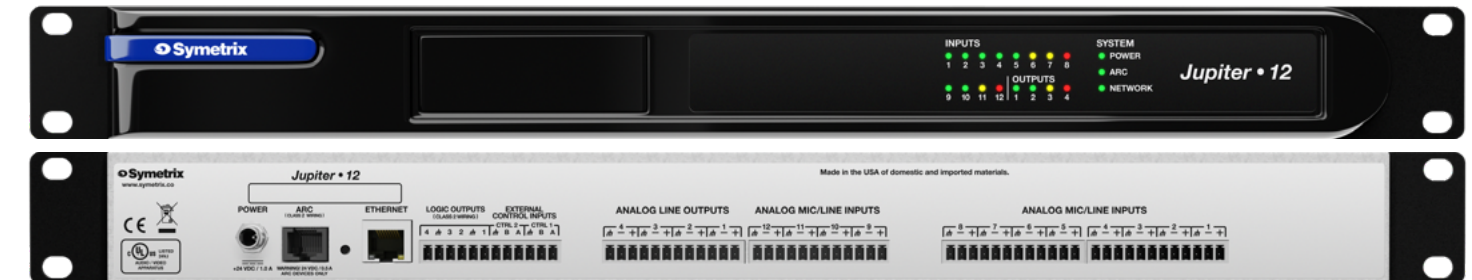
### Powerful Turn-key DSP

#### Product Highlights

- Flexible Fixed Architecture DSP with 85 preconfigured apps
- 12 mic/line inputs
- 4 line outputs
- High Performance Symetrix preamps
- 4x4 GPIO
- ARC Remote Port
- Ethernet port for programming with Jupiter software for Windows
- Embedded web server provides remote metering, diagnostics and configurable ARC-WEB browser control
- Flexible user control via ARC remotes, ARC-WEB, TCP/UDP
- Dedicated front panel LEDs display audio levels and system status
- External Power Supply

#### Compliance

- UL 60065, cUL 60065, IEC 60065, EN 55103-1, FCC Part 15, RoHS



Jupiter 12 Part Number 80-0042

## Jupiter 8

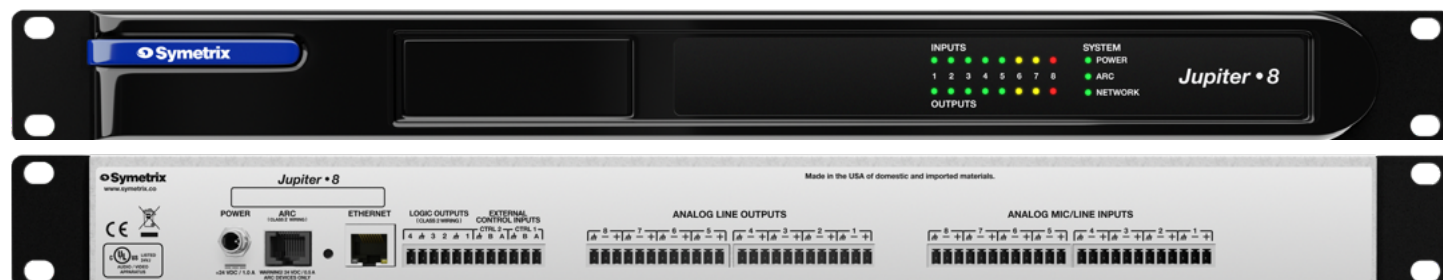
### Powerful Application-Based Turn-key DSP

#### Product Highlights

- Flexible Fixed Architecture DSP with 85 preconfigured apps
- 8 mic/line inputs
- 8 line outputs
- High Performance Symetrix preamps
- 4x4 GPIO
- ARC Remote Port
- Ethernet port for programming with Jupiter software for Windows
- Embedded web server provides remote metering, diagnostics and configurable ARC-WEB browser control
- Flexible user control via ARC remotes, ARC-WEB, TCP/UDP
- Dedicated front panel LEDs display audio levels and system status
- External Power Supply

#### Compliance

- UL 60065, cUL 60065, IEC 60065, EN 55103-1, FCC Part 15, RoHS



Jupiter 8 Part Number 80-0037

## Zone Mix 761

### Powerful Turn-key Multi-zone DSP for Paging and Music Management

#### Product Highlights

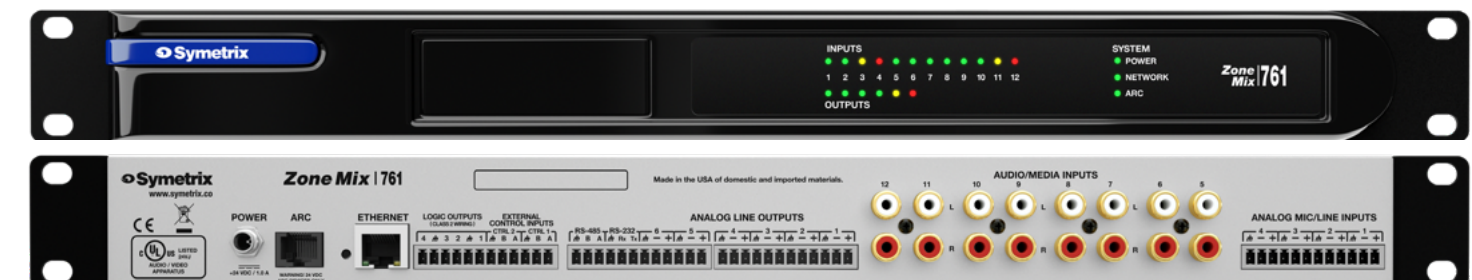
- Fixed Architecture DSP featuring a full complement of world class processing
- 4 mic/line inputs for paging from up to 3 locations plus emergency page
- 8 stereo audio/media inputs
- 6 line outputs
- High Performance Symetrix preamps
- 4x4 GPIO
- RS232 Control Terminal Blocks
- RS485 Control Terminal Blocks
- ARC Remote Port
- Ethernet port for programming with Zone Mix 761 software for Windows
- Embedded web server provides remote metering, diagnostics

and configurable ARC-WEB browser control

- Flexible user control via ARC remotes, ARC-WEB, TCP/UDP
- Dedicated front panel LEDs display audio levels and system status
- External Power Supply

#### Compliance

- UL 60065, cUL 60065, IEC 60065, EN 55103-1, FCC Part 15, RoHS



Zone Mix Part Number 80-0070

# xIO Bluetooth Series

## PRODUCT OVERVIEW

The Symetrix xIO Bluetooth family of PoE-powered Dante endpoints are the perfect addition to any installation needing flexible wall mounted connectivity with world class audio performance.

Available in black or white, the xIO Bluetooth family has a clean, sleek design and is compatible with standard Decora faceplates. The family consists of two models: the xIO Bluetooth for those needing simple convenient Bluetooth IO in a single gang form factor, and the xIO Bluetooth RCA-3.5 which adds additional flexibility in the form of stereo RCA and 3.5 analog IO for the connection of user supplied devices. Using a modern and full-featured Bluetooth 5.0 chipset, the xIO Bluetooth family offers extended range, a stable connection, and world-class audio quality.

Perfect for Conferencing, Hospitality, Education, or House of Worship use, all aspects of the device can be controlled using Symetrix remotes, SymVue touchscreens panels, or user devices. And complete configuration is fast and efficient from within Symetrix Composer software.

### xIO Bluetooth RCA 3.5



#### xIO BLUETOOTH RCA-3.5

- Dual gang Bluetooth 5.0, stereo RCA, and stereo 3.5mm PoE Dante endpoint
- Stereo RCA and 3.5mm unbalanced analog inputs with flexible routing and summing
- Simultaneous and independent stereo RCA and 3.5 mm unbalanced analog outputs
- 4 channels of Dante IO
- Selectable Bluetooth modes: Media only, Phone only, Both
- PIN code Bluetooth security
- Selectable single or multiple memorized Bluetooth pairings
- LED blackout mode
- Powerful configuration from Composer with flexible control from Symetrix remotes, SymVue touchscreens panels, or user supplied devices
- Perfect for Conferencing, Hospitality, Education, House of Worship, or Residential use
- Available with black or white finishes
- Supports standard dual gang Decora faceplates

### xIO Bluetooth



#### xIO BLUETOOTH

- Single gang Bluetooth 5.0 PoE Dante endpoint
- Selectable Bluetooth modes: Media only, Phone only, Both
- PIN code Bluetooth security
- Selectable single or multiple memorized Bluetooth pairings
- LED blackout mode
- Powerful configuration from Composer with flexible control from Symetrix remotes, SymVue touchscreens panels, or user supplied devices
- Perfect for Hospitality, Education, House of Worship, Conferencing, or Residential use
- Available in US or EU single gang form factors and black or white finishes
- Supports standard single gang Decora faceplates

### xIO Bluetooth Euro



xIO Bluetooth RCA-3.5, Black Part Number	80-0191
xIO Bluetooth RCA-3.5, White Part Number	80-0189
xIO Bluetooth, Black, Euro Part Number	80-0187
xIO Bluetooth, Black, US Part Number	80-0186
xIO Bluetooth, White, Euro Part Number	80-0188
xIO Bluetooth RCA-3.5, White, US Part Number	80-0185

#### Compliance

- EN 55032, FCC Part 15 (EMC-USA), EN 301 489-17 V3.2.4:2020-09



# xIO Audio Expanders with Dante

## PRODUCT OVERVIEW

Easily expand your Radius NX, Edge or Prism Dante DSPs system with xIO Audio Expanders

## COMMON SELLING POINTS

- Designed for use with Symetrix Dante-enabled DSPs
- Software setup using Composer
- Low-cost way to increase system analog I/O capacity
- Ultra low latency – no audible delays
- Top-of-the-line specifications

## EXPAND ANALOG I/O USING DANTE

For use with Symetrix Radius NX, Prism and Edge DSPs, the Symetrix Dante I/O Expanders use Composer for setup. Using Composer eliminates switches, circuit board jumpers, and mechanical adjustments as well as the need for third-party software applications

### xIn 4 | xOut 4 | xIO 4x4

- 1/2 Rack Form Factor
- PoE – injectors included
- xIn 4 – 4 analog mic/line inputs
- xIO 4x4 – 4 analog mic/line inputs + 4 analog outputs
- xOut 4 – 4 analog outputs
- Optional rack and surface mounting kits sold separately

### xIn 12 | xOut 12

- Built-in network switches. Direct connections to Radius, Prism and Edge DSP's
- Internal power supplies
- xIn 12 – 12 analog mic/line inputs
- xOut 12 – 12 analog mic/line outputs

### xIO Stage 4x4

- Premium 4 in x 4 out Dante digital snake
- PoE
- Neutrik Metal body DL series XLR connectors
- 14 gauge A1008 steel construction
- Wall or floor mounted
- Easily mounts in 8" x 8" NEMA Junction Box



## xIO Stage 4x4

## 4 Channel Dante Enabled Analog In/Out Expander

### Product Highlights

- Premium 4 in x 4 out Dante digital snake
- PoE
- Neutrik Metal body DL series XLR connectors
- 14 gauge A1008 steel construction
- Wall or floor mounted
- Easily mounts in 8" x 8" NEMA Junction Box

### Compliance

- UL 60065, cUL 60065, IEC 60065, FCC 15.109, FCC 15.109(g), FCC 15.107, EN 55032, EN 55103-2, EN 61000-3-3, EN 61000-3-2, ICES-003, RoHS



xIO Stage 4x4 Part Number 80-0168

## xIn 4

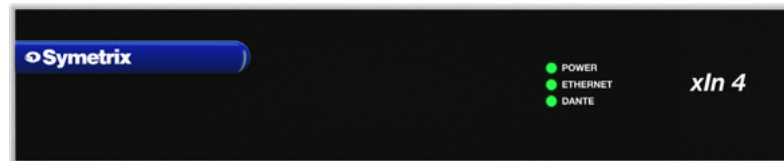
## 4 Channel Dante Enabled Analog Audio Input Expander

### Product Highlights

- 1/2 Rack Form Factor
- PoE – injectors included
- 4 analog mic/line inputs
- Optional rack and surface mounting kits sold separately
- 4 channel Dante Transmit

### Compliance

- UL 60065, cUL 60065, IEC 60065, FCC 15.109:2015, FCC 15.109(g):2015, FCC 15.107:2015, (CISPR 32), EN 55032:2012, EN 55103-2:2009, EN 61000-3-3:2013, EN 61000-3-2:2006, ICES-003:2012, RoHS



xIn4 Part Number 80-0110

## xIO 4x4

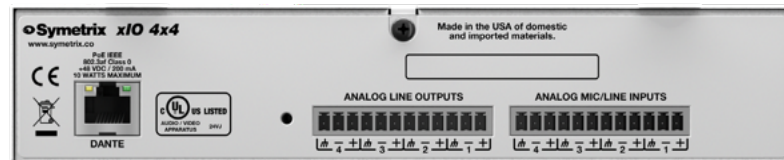
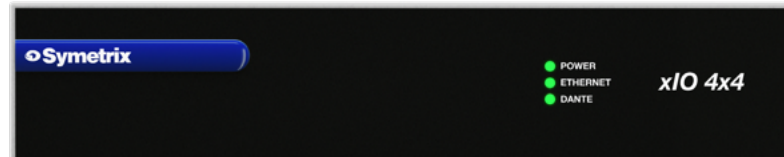
## 4 Channel Dante Enabled Analog Audio Input / Output Expander

### Product Highlights

- 1/2 Rack Form Factor
- PoE – injectors included
- 4 analog outputs
- Optional rack and surface mounting kits sold separately
- 4x4 Dante Transmit and Receive

### Compliance

- UL 60065, cUL 60065, IEC 60065, FCC 15.109:2015, FCC 15.109(g):2015, FCC 15.107:2015, (CISPR 32), EN 55032:2012, EN 55103-2:2009, EN 61000-3-3:2013, EN 61000-3-2:2006, ICES-003:2012, RoHS



xIO 4x4 Part Number 80-0106

## xOut 4

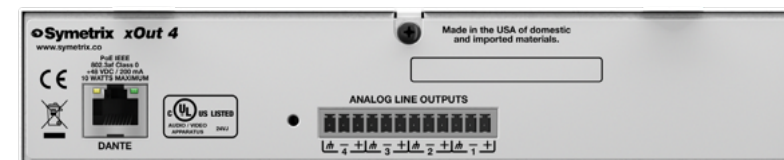
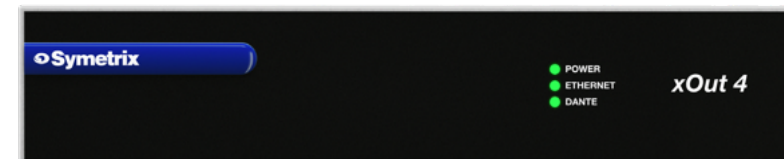
## 4 Channel Dante Enabled Analog Audio Output Expander

### Product Highlights

- 1/2 Rack Form Factor
- PoE – injectors included
- 4 analog mic/line input
- 4 analog outputs
- Optional rack and surface mounting kits sold separately
- 4 channel Dante Receive

### Compliance

- UL 60065, cUL 60065, IEC 60065, FCC 15.109:2015, FCC 15.109(g):2015, FCC 15.107:2015, (CISPR 32), EN 55032:2012, EN 55103-2:2009, EN 61000-3-3:2013, EN 61000-3-2:2006, ICES-003:2012, RoHS



xOut 4 Part Number 80-0112

## xIn 12

## 12 Channel Dante Enabled Analog Audio Input Expander

### Product Highlights

- 12 channel Dante™ transmit
- Dante™ protocol over standard IT networks with ultra-low latency
- 12 mic/line inputs, with +48 VDC phantom power and industry leading performance specifications
- Composer™ software setup and control eliminates switches, circuit board jumpers, mechanical adjustments, or the need for third-party software
- Dante™ (Secondary) gigabit Ethernet port supports redundant Dante™ network audio implementation or daisy-chaining of up to 10 units with external network switches
- Internal universal input power supply

### Compliance

- UL 60065, cUL 60065, IEC 60065, EN 55022, EN 55032, EN 6100-3-2, EN 6100-3-3, ICES-003, EN 55103-2, FCC Part 15, RoHS



xIn 12 Part Number 80-0086

## xOut 12

## 12 Channel Dante Enabled Analog Audio Output Expander

### Product Highlights

- 12 channel Dante™ receive
- Dante™ protocol over standard IT networks with ultra-low latency
- 12 line outputs, with industry leading performance specifications
- Composer™ software setup and control eliminates switches, circuit board jumpers, mechanical adjustments, or the need for third-party software
- Dante™ (Secondary) gigabit Ethernet port supports redundant Dante™ network audio implementation or daisy-chaining of up to 10 units with external network switches
- Internal universal input power supply

### Compliance

- UL 60065, cUL 60065, IEC 60065, EN 55032, EN 55103-2, EN 55022, EN 61000-3-2, EN 61000-3-3, FCC Part 15, ICES-003, RoHS



xOut 12 Part Number 80-0090

## xControl

## External Control Expander

### Product Highlights

- Analog / Logic Control Inputs | Logic Outputs | RS-232
- Flexible 1/2 Rack Form Factor
- Powered Via PoE (Switch or Injector)
- Each of the 8 flexible analog control inputs may be configured for 1 potentiometer or 2 switches
- The 16 logic outputs may be used to drive LEDs, external relays, or control contact closure ports
- Either of the 2 RS-232 ports may be configured to receive commands from, or issue commands to, third-party control systems

- Applications include adding push-to-talk capability and LED activity indication in conferencing and paging applications and
- RS-232 projector, camera, and lighting control
- Multiple xControls may be combined
- Straight forward set-up and management using Composer™ open-architecture software
- Versatile half-rack design for mounting in optional 1U rack tray or surface mount with optional bracket

### Compliance

- UL 60065, cUL 60065, IEC 60065, EN 55103-1, FCC Part 15, RoHS



xControl Part Number 80-0089

# W Series Remotes Put You in Control

## W Series Remotes

### PRODUCT OVERVIEW

With an OLED display and dedicated knobs and buttons, the new W Series remotes provide standard IP communication over Ethernet creating a single standardized infrastructure, and come in both US and EU sizes.

Available in four configurations, the controls of the W Series may be used for source selection, volume, mute, and preset recalls for any Composer™ based Symetrix DSP.

Ideal for Houses of Worship, Hospitality, Education, Performance/Live Sound, and Conferencing Spaces — the W Series remotes have set a new standard for IP controllers in terms of both functionality and overall construction quality.

### COMMON SELLING POINTS

- IP and PoE based controllers
- Four flexible configurations
- User-programmable displays for labeling and feedback
- Configurations available in US and EU form factors
- Simple and easy end-user control of the business audio system
- Simple deployment with standard PoE switch
- Flexible display accommodates the use of Symbols to simplify operation and overcome language barriers
- Programming features include the ability to designate an arbitrary contiguous number of buttons as a radio button group while allowing the remaining buttons to be assigned to individual functions
- Perfect for Houses of Worship, Hospitality, Education, Performance/Live Sound and Conferencing spaces
- Works with any Composer based DSP system

### W1

Features a push button encoder and display. The encoder can operate in a continuous (as in a volume control) fashion. The push button can toggle a binary or momentary action as in a mute or preset recall or toggle between two encoder assignments.

### W2

Features four momentary buttons and display. Programming features are similar to the ARC-SW4e, however updates include the ability to designate an arbitrary contiguous number of buttons as a radio button group while allowing the remaining buttons to be assigned to individual functions.

### W3

Features a push button encoder, four momentary buttons, and display. Provides expanded “Select and Set” functionality, multiple encoder modes, and encoder menu select.

### W4

Features a push button encoder, eight momentary buttons, and display. Expands the functionality of the W3 to include up to eight different assignments for “Select and Set”, radio groups, and individual buttons. (Only available in US form factor)



### Product Highlights

- Simple deployment with standard PoE switch
- Features a push button encoder and display
- Available in US or EU single gang form factors and black or white finishes
- Supports standard single gang Decora faceplates

### Compliance

ICES-003, EN 55032, EN 55103-2, EN 61000-3-2, EN 61000-3-3, FCC Part 15, RoHS.



### Product Highlights

- Simple deployment with standard PoE switch
- Features four momentary buttons and display
- Available in US or EU single gang form factors and black or white finishes
- Supports standard single gang Decora faceplates

### Compliance

ICES-003, EN 55032, EN 55103-2, EN 61000-3-2, EN 61000-3-3, FCC Part 15, RoHS.



### Product Highlights

- Simple deployment with standard PoE switch
- Features a push button encoder, four buttons, and display
- Available in US or EU single gang form factors and black or white finishes
- Supports standard single gang Decora faceplates

### Compliance

ICES-003, EN 55032, EN 55103-2, EN 61000-3-2, EN 61000-3-3, FCC Part 15, RoHS.



### Product Highlights

- Simple deployment with standard PoE switch
- Remote with push button encoder, eight buttons, and display
- Only available in US 2-gang form factor
- Supports standard dual gang Decora faceplates

### Compliance

ICES-003, EN 55032, EN 55103-2, EN 61000-3-2, EN 61000-3-3, FCC Part 15, RoHS.

# ARC Wall Panel Adaptive Remote Controls

## ARC Wall Panels

### PRODUCT OVERVIEW

The ARC Wall Panels control basic audio functions or complex logic events.

### COMMON SELLING POINTS

- User Control of Symetrix DSP Systems
- Flexible and Extensible
- Easy to Install Using CAT5/6 Cabling
- Easy to Program Using Composer
- Supported by All Symetrix DSPs

### ARC-3

Adaptive Remote Control



Black Part Number	80-0135
White Part Number	80-0103

#### Product Highlights

- 32 menus, 32 items
- Control basic audio functions or complex logic events
- Volume/mute, preset selection, room combining, much more
- Capacitive touch with LED highlighting
- Available in white and black
- Universal mounting, in-wall or surface mount, US or EU/UK
- (ARC-3 is not compatible with Jupiter, or Zone Mix 761)

#### Compliance

EN 55103-1, EN 55103-2, FCC Part 15, EN 55032, RoHS

### ARC-2e

Adaptive Remote Control



Black Part Number	80-0155
White Part Number	80-0056

#### Product Highlights

- 24 menus, 16 items
- Control basic audio functions or complex logic events
- 8 character backlit display, 31 scrolling characters
- 3 navigation buttons
- Programmable brightness

#### Compliance

EN 55103-1, FCC Part 15, RoHS

### ARC-K1e

Adaptive Remote Control



Black Part Number	80-0137
White Part Number	80-0078

#### Product Highlights

- Rotary encoder with pushbutton, typically controlling volume
- 8-segment LED ladder indicates relative levels
- Additional LEDs indicating selected active control
- Idle mode for LED dimming in light sensitive environments
- Hardware lockout pins for installer provided key switch
- Available in US single gang form factor and black or white finishes
- Supports standard single gang Decora faceplates

#### Compliance

RoHS

### ARC-SW4e

Adaptive Remote Control



Black Part Number	80-0138
White Part Number	80-0079

#### Product Highlights

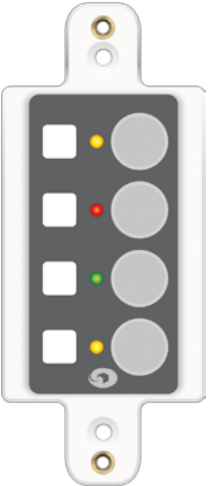
- Four switches programmable as latched, momentary, radio buttons
- Control of mute, source selection, presets
- Buttons may be linked to tri-color LEDs, or LEDs may be programmed independently
- Idle mode for LED dimming in light sensitive environments
- Hardware lockout pins for installer provided key switch
- Available in US single gang form factor and black or white finishes
- Supports standard single gang Decora faceplates

#### Compliance

RoHS

### ARC-EX4e

Adaptive Remote Control



Part Number	80-0080
-------------	---------

#### Product Highlights

- Low cost means to expand the capabilities of ARC-K1e and ARC-SW4e
- Identical in function to ARC-SW4e
- Up to 4 ARC-EX4e's may be combined with ARC-K1e and up to 3 may be combined with ARC-SW4e
- Available in US single gang form factor and black or white finishes
- Supports standard single gang Decora faceplates

#### Compliance

RoHS

### RC-3

Adaptive Remote Control



Black Part Number	80-0146
White Part Number	80-0145

#### Product Highlights


- A basic potentiometer-based analog remote control
- Interfaces with external control inputs to provide volume, source, or preset selection
- Easy to program
- Well suited for single point of control applications
- Available in US single gang form factor and black or white finishes
- Supports standard single gang Decora faceplates

#### Compliance

RoHS

### ARC-PSe

Adaptive Remote Control



120 VAC Part Number	80-0093
---------------------	---------

#### Product Highlights

- Distributes power and data to multiple ARC wall panels via eight RJ-45 connectors over long distances
- Connects directly to Symetrix DSPs using standard CAT5/6 cables
- Supports flexible 'star' configuration, 'daisy-chain', or a hybrid of the two
- Versatile half-rack design. Mounts in an optional 1U rack tray or surface mount with optional bracket
- ARC Power Calculator spreadsheet helps determine maximum ARC quantities and distances between wall panels

#### Compliance

UL 60065, cUL 60065, IEC 60065, EN 55103-1, FCC Part 15, RoHS

# The Next Generation of Control

## Touchscreens

### PRODUCT OVERVIEW

Symetrix touchscreens are ideal for Houses of Worship, Conference Rooms, Auditoriums, Hospitality — anywhere users need customized control of the System. Control screens can feature as much or as little as you want, showing customer branding and easy-to-use intuitive controls.

### COMMON SELLING POINTS

- Available in 10" and 5" hi-res touchscreens for Symetrix Composer DSP systems
- Easy-to-program SymVue control interface
- Up to 128 touchscreens per system with batch configuration of multiple units
- Fits U.S. and European 2-gang wall and junction boxes
- Supports landscape or portrait orientation (T-10 Glass Only)
- PoE/PoE+ powered
- Optional tabletop stand accessory
- Symetrix 5-Year Warranty

### SYMVUE INTERFACE

Symetrix touchscreens leverage the power of Symetrix's award-winning SymVue GUI authoring technology, allowing control screens to be created, tested and simulated offline in Composer before being deployed to the touchscreens. Multiple pages with custom controls, unique backgrounds, corporate logos and more can be created quickly and easily with SymVue.

### CUSTOM MULTI-LINGUAL GUIs

Can be quickly designed using Symetrix Composer and SymVue software, then exported to a system.

### EASY BATCH CONFIGURATION OF MULTIPLE TOUCHSCREENS

Directly managed by Symetrix Composer, touchscreens can simultaneously export/update to named groups of up to 128 touchscreens with programmers' choice of four different configurations for each export.

### COMPACT AND UNOBTRUSIVE

Symetrix touchscreens fit in any U.S. or EU 2-gang receptacle.

### ETHERNET-POWERED

There is no need for external power supplies, since Symetrix touchscreens are powered over Ethernet.

### Product Highlights

- 5-inch 800 x 400 high-resolution touchscreen for Symetrix systems
- Drag and drop design and configuration from Symetrix Composer software
- Up to 128 T Series Touchscreens per system with batch configuration of multiple units
- PoE powered
- Fits U.S. and European 2-gang wall

### Compliance

- Includes optional trim ring
- Optional tabletop stand accessory
- Symetrix 5-Year Warranty
- EN 55032, EN 55103-2, EN 61000-3-2, EN 61000-3-3 (EMC-International), FCC Part 15 (EMC-USA), RoHS (health/environmental), UKCA, EAC

### and junction boxes

- Includes optional trim ring
- Optional tabletop stand accessory
- Symetrix 5-Year Warranty

### T-5 Glass



T-5 Glass Part Number	80-0169
T-5 Glass Tabletop Stand Part Number	80-0166

### T-10 Glass



T-10 Glass Part Number	80-0190
T-10 Glass Tabletop Stand Part Number	80-0192

### Product Highlights

- 10-inch 1920x1200 high-definition touchscreen for control of Symetrix systems
- Best-in-class brightness of 850 nits
- Drag and drop design and configuration from Symetrix Composer software
- Up to 128 T-Series Touchscreens per system with batch configuration of multiple units
- PoE+ powered

### Compliance

- Fits U.S. and European 2-gang wall and junction boxes
- Supports Landscape or Portrait orientation
- Optional tabletop stand accessory
- Symetrix 5-Year Warranty

### Compliance

- EN 55032, FCC Part 15 (EMC-USA), EN 301 489-17 V3.2.4:2020-09

# Network-Based AV Control Platform

## Control Server

### PRODUCT OVERVIEW

A flexible and extensible approach to the control of Symetrix Composer-enabled DSPs and select third-party AV components. Centralized server-based technology enables comprehensive design, deployment, and maintenance of large and sophisticated systems employing numerous control endpoints supporting multiple simultaneous users.

### COMMON SELLING POINTS

- A web services platform for AV control
- Programmed using Composer software
- Built-in wireless and wired connectivity
- Browser-based administration used to manage app licenses, users, and user access
- Serves BYOD computers, tablets, and phones
- WI-FI access makes for a secure “AV control island”
- Easy to deploy multi-touch “Mixer” app provides up to 32 faders and mutes with customizable labels, colors, ranges, and display units. It can trigger up to 16 presets
- 5 licenses of each of the Mixer and SymVue App are included
- Expand with additional SymVue and Mixer app licenses as needed

### WIRED AND WIRELESS NETWORK INTERFACES

Control Server’s wired Gigabit Ethernet port enables control via dedicated AV or general purpose facility networks, as well as direct communication with networked DSP hardware. Operating in wireless mode, Control Server functions as an access point providing mobile device connectivity – in essence providing a secure “AV control island”.

### STRAIGHT-FORWARD SETUP AND DEPLOYMENT

Control Server is designed into a system using Composer software – Symetrix’s award winning open-architecture application. Composer is used to locate and program Control Server and other Symetrix DSPs and accessories. Control Server’s browser-based administration is then used to manage app licenses, users, and user access.

### SYMVUE FOR CONTROL SERVER

Award winning SymVue running on Control Server hardware makes possible robust deployment and maintenance of large scale systems by supporting numerous and diverse browser-based endpoints under the control of multiple simultaneous users.

### MIXER FOR CONTROL SERVER

Mixer supports up to 32 virtual channel strips, each with an assignable fader and a mute button, and dynamic screen-sizing and orientation. Mixer can be used on virtually any mobile device. Users can group and hide channels, assign custom labels and colors, and adjust fader resolution and travel. Multi-touch functionality makes possible simultaneous adjustment of multiple faders, just like a physical mixer. A Mixer instance can be saved to a smart device’s home page for instant access, appearing as a native app. Multiple users can operate the same instance, and user access control can be provided via username and password security for each user.

### BENEFITS OF THE “APP” MODEL

Because apps are virtual, they serve to reduce overall system costs by cutting down on hardware requirements. Unlike Control Server apps, functionally equivalent hardware products are expensive and prone to wear, tear, and failure.

### UNLIMITED PROGRAMMING FLEXIBILITY

Control Server is programmed using Composer – Symetrix’s award-winning open-architecture programming application. Unique to Composer is the ability to natively configure Symetrix for select third party Dante hardware – thereby eliminating the confusion of multiple or redundant software applications. Learn more about Composer here.



### Compliance

UL 60065, cUL 60065, IEC 60065, CISPR 32:2015 Class A, EN 55032:2012, EN 55103-2, FCC Part 15, ICES-003:2016

Control Server SymVue App	20-0026
Control Server Mixer App	20-0026
Part Number	80-0119

Symetrix Software

# Easily Design, Program and Configure with Composer™ Software

## Composer™

### PRODUCT OVERVIEW

Award-winning Composer for Windows® handles end-to-end configuration of Radius NX, Prism, and Edge, DSPs...including creation of customized GUIs, scheduling, presets, logic, security, and integration of Symetrix and third-party control solutions.

### SELLING POINTS

- Complete end-to-end open-architecture DSP programming using only a single application
- Natively configures Dante™ connections and routings. Dante Domain Manager (DDM) ready
- Efficient in-depth tools for end-user GUI design and deployment

### SUPPORTS PROGRAMMING FOR

Radius NX, Edge, and Prism DSPs and Accessories

### POWERFUL, EASY-TO-USE PROGRAMMING

Award-winning Composer for Windows handles end-to-end configuration of Symetrix DSPs... including creation of customized GUIs, scheduling, presets, logic, security, and integration of Symetrix and third-party control solutions. A complete end-to-end DSP signal path can be designed using this single app. In addition to programming one to many Symetrix DSPs, Composer works seamlessly with Dante. It natively configures the setup and routing of Symetrix Dante I/O Expanders and third-party Dante video endpoints, enabling ultra-low-latency 4K UHD video over IP with the same Dante-enabled Symetrix DSP system you rely on for audio.

### COMPOSER IS "OPEN ARCHITECTURE"

Audio signal routings, DSP modules, and control signal processing are at the sole discretion of the programmer. Systems can be designed to perfectly match specifications and conform as requirements change or evolve. All classes of audio processing modules for signal routing and shaping are provided. Application-specific modules address special purpose requirements like conferencing and room combining.

### GOING DEEP WITH DANTE®

All Symetrix Composer-programmed DSPs are ready for Dante DDM, Audinate's network management software that enables user authentication, role-based security and audit capabilities for Dante networks. Dante Domain Manager brings IT best practices to AV, making audio and video networking more secure, more scalable and more controllable.

Composer integrates Visionary Solutions' PacketAV Duet® Dante-enabled video encoder and decoder products, eliminating the drawbacks of conventional switch matrix systems. Within the familiar drag-and-drop Composer interface, you can now route video, assign end points, control video walls and take advantage of live previews for confidence monitoring. Composer™ also has direct support of audio and video endpoints from Shure®, Audio-Technica®, Powersoft™, and Clockaudio™.

### FLEXIBLE AND ROBUST REMOTE CONTROL

Composer supports a variety of Symetrix and third-party remote controls. Symetrix T Series high-definition touchscreens, telco dialers, W Series Remotes, ARC Wall Panels, ARC-WEB, Control Server, and SymVue Windows GUIs are programmed directly from Composer. Control of Symetrix DSPs from third-party RS-232, UDP/IP, and TCP/IP devices is enabled using Composer™ Control Protocol.



# SymVue Bring GUIs to Life in Minutes

## SymVue GUI Authoring

### PRODUCT OVERVIEW

Create custom, attractive and easy to use SymVue Control Screens in minutes. Create simple drag and drop controls without any script writing or coding. Using Composer's SymVue export feature, Control Screens can feature control objects, indicators, labels and custom branding. GUIs can be as simple or as complicated as you need, with multi-page navigation and multiple access levels. SymVue can even allow control of 3rd-party devices and full system preset recall.

SymVue Control Screens can be deployed to T Series touchscreens, Windows computers and Symetrix Control Server for wireless use from any browser including mobile phones or tablets. SymVue puts powerful control right where you need it.

### SELLING POINTS

- Rapid Composer-based GUI authoring
- Created and tested offline – no scripting required
- 3 Target Platforms: Control Server, T Series Touchscreens, Windows
- Total control of colors, fonts, symbols, custom graphics
- Always in sync with W Series Remotes, ARC and 3rd-party control systems
- Control Server version supports browser-enabled devices

### GUIs COME TO LIFE IN MINUTES - NOT DAYS

Using Composer's SymVue export feature commonly adjusted control objects, indicators, and labels are chosen and configured into sets of attractive, easily accessible multi-user screens – created and tested offline without any script writing or coding.

### THREE TARGET HARDWARE PLATFORMS

Symetrix Control Server, Symetrix T Series Touchscreens, and Microsoft Windows computers and tablets.

### TAKE CONTROL

With SymVue, designers exercise complete discretion over colors, fonts, custom symbols and graphics to satisfy their customers' exact requirements.

### ALWAYS IN SYNC

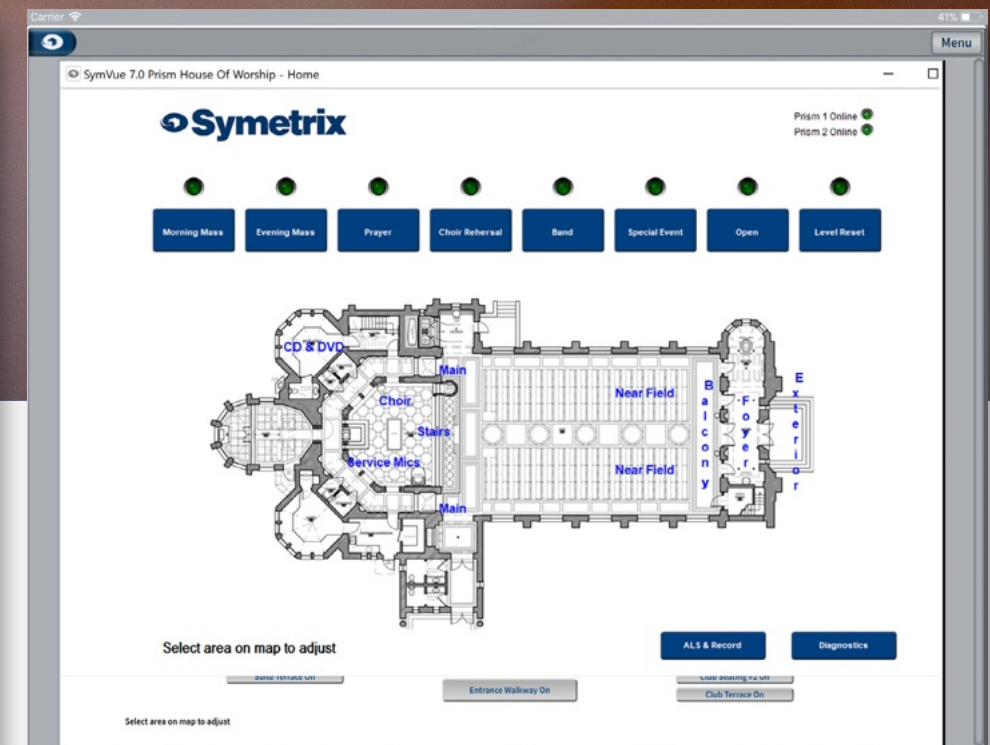
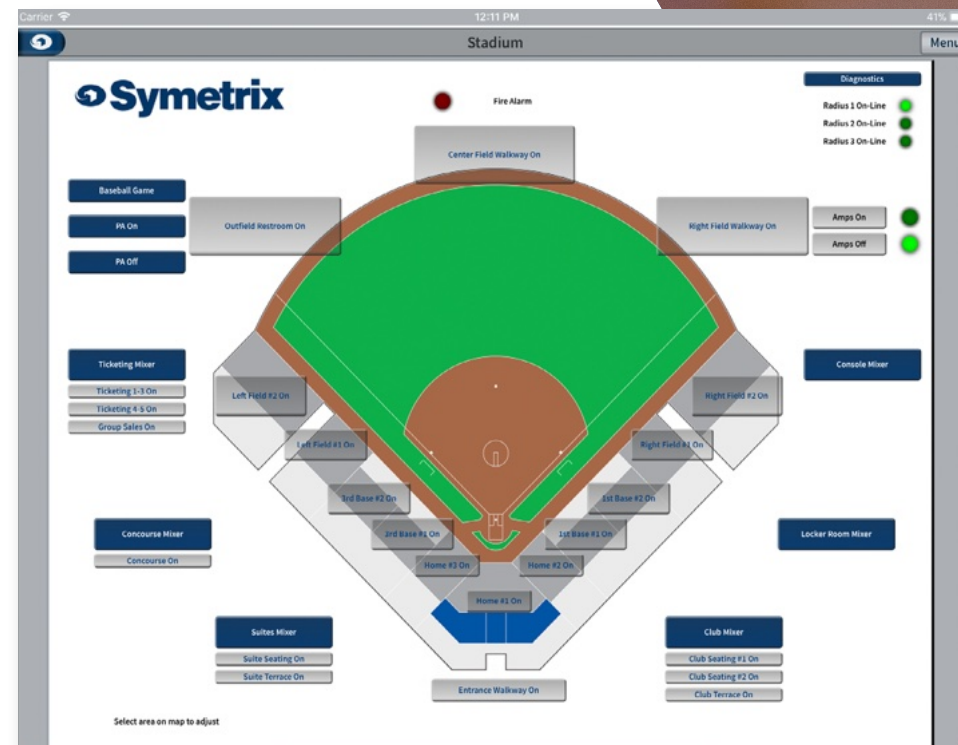
SymVue control screens work alongside Symetrix W series Remotes, ARC Wall Panels, ARC-WEB, and 3rd-party control systems. Parameter changes and indicators on all control devices are kept in perfect synchronization.

### THE BENEFITS OF SYMETRIX CONTROL SERVER

Virtually any HTML browser-enabled device (an Apple iPad, for example) can connect to Control Server and in turn provide multi-touch control of Symetrix DSPs and select third party audio and video hardware.

### SYMVUE LICENSING

SymVue is licensed without charge for an unlimited number of Symetrix T Series Touchscreen and Windows configurations. Five SymVue for Control Server configurations are free of charge with additional licenses available for purchase in blocks of five.





# Customize Your Control With Intelligent Modules

## Intelligent Modules

### PRODUCT OVERVIEW

Symetrix Intelligent Modules expand the capabilities of a Composer site with customizable control of third-party devices and powerful manipulation of control data within a design. Like any other module within Composer, Intelligent Modules are easy to use and can be created by the system designer or imported from our library of premade solutions.

Comprised of a custom control view and a script written in Lua, users interact with the controls to trigger functionality in the script. The script can communicate with a third-party piece of hardware via TCP, UDP or HTTP, allowing a user to monitor and control that hardware. Intelligent Modules can also interact with other modules in a design through input and output control pins.

### WHAT EXACTLY DO INTELLIGENT MODULES DO?

Almost anything. Intelligent Modules are most often used to control third-party hardware allowing any product to feel like a native device within the Symetrix ecosystem. They can also be used to solve complicated logic problems delivering almost any functionality you can imagine.

### EXAMPLE USE CASES FOR AN INTELLIGENT MODULE

- Camera Control Programming
- Media Manager Remote Control
- Call to Prayer System Automation
- Weather Display

### WANT US TO CREATE AN INTELLIGENT MODULE FOR YOU?

Let our experienced team of application engineers craft a custom Intelligent Module designed to meet your unique project requirements by filling out the [Pro-Services Request Form](#).

Prayer	Time of Prayer	Duration in Minutes
Fajr	06:21	1 Disable
Sunrise	07:56	1 Disable
Dhuhr	12:08	1 Disable
Asr	14:03	1 Disable
Sunset	16:20	1 Disable
Maghrib	16:20	1 Disable
Isha	17:54	1 Disable
Midnight	00:08	1 Disable
Imsak	06:11	1 Disable

Symetrix Software

# Wireless Control is Made Easy with the ARC-WEB User Interface

## ARC-WEB User Interface

### PRODUCT OVERVIEW

Virtual User Interface for End User Control of Presets / Volume / Mute / Source

### COMMON SELLING POINTS

- Virtual control of Symetrix DSPs using phones, tablets, and computers via Symetrix DSP embedded web server
- User Control of Presets, Volume, Mute, Source
- Four unique instances of ARC-WEB are flexible and secure
- Each of four users can be assigned a different ARC-WEB with unique privileges and security
- Simple Installation- just connect a low cost wireless access point to DSPs - no additional hardware is required
- Symetrix DSPs supporting ARC-WEB : Radius NX, Edge, Prism, Jupiter, and Zone Mix 761

### VIRTUAL CONTROL USING PHONES, TABLETS, OR COMPUTERS

Virtual Control Using Phones, Tablets, or Computers. Any popular browser can be used to control audio via the web-servers embedded in Radius NX, Edge, Prism, Jupiter, and Zone Mix 761 DSPs. Users can control volume, mute, source selection and other important parameters of their sound systems from devices they already own.

### FLEXIBLE AND SECURE

There are four unique instances of ARC-WEB. Each of four users can be assigned a different ARC-WEB with unique privileges and security.

### SIMPLE INSTALLATION

ARC-WEB is built into all Symetrix DSPs. Other than connecting a low cost wireless access point to your DSP(s), no additional hardware is required.



# Offering Stellar Performance with Jupiter Software

## Jupiter Software

### PRODUCT OVERVIEW

Jupiter Software programs and controls Jupiter hardware, offering turn-key audio processing for over 85-plus applications.

### COMMON SELLING POINTS

- Turn-key programming for rapid deployment with zero learning curve
- For use in a variety of venues including schools, athletic complexes, houses of worship, bars and night clubs, and theaters
- Plenty of processing power for EQ, feedback fighters, FIR filters, multi-dynamics, crossovers, and more
- A free library of over 85 versatile turn-key apps included with every product
- Each app's signal flow and DSP modules have been carefully chosen and tested to be the most appropriate for its intended use
- Apps categories: Mixing and Routing, Public Address and Distribution, Sound Reinforcement, Special Purpose Signal Processing
- Control options include low-cost ARC Wall Panels, ARC-WEB, and/or 3rd party touch-screens

### A FASTER WAY TO GET THE JOB DONE

Jupiter hardware is programmed using a Windows® application which supports a library of over 85 versatile turn-key apps. Each app's signal flow and DSP modules have been carefully chosen to be the most appropriate for their intended use. With Jupiter apps, there's minimal programming time. All apps are fully tested and ready to go right out of the box serving four common audio system requirements:

### MIXING AND ROUTING

Mixing and Routing are essential functions. From straight mono or stereo mixing for lecture halls and banquet rooms to advanced gating or gain-sharing automixing for courtrooms and town hall meeting rooms, Jupiter's elegant interface makes complex signal management effortless.

### PUBLIC ADDRESS DISTRIBUTION

In bustling transit stations, busy retail outlets and noisy restaurants, paging announcements and distributed background music must be intelligible and always at the right volume. Jupiter's priority mixer and ambient noise compensation modules ensure the message is always heard.

### SOUND REINFORCEMENT

Loudspeaker management is the crucial last step in the signal processing chain. A properly tuned system directs the exclusive frequency ranges required by each driver type to the proper drivers, and accounts for driver time alignment, driver/cabinet design anomalies, and room acoustics. Jupiter speaker management apps are built from an extensive pallet of filters, EQ, crossovers, delay, and dynamics modules, pre-configured into common signal chains and ready for deployment in endless venues including houses of worship, night clubs, and theaters.

### SPECIAL PURPOSE SIGNAL PROCESSING

Recording studios, broadcast facilities and production environments rely on extreme processing. Jupiter has a surplus of power for demanding processes such as EQ, feedback fighters, FIR filters, multi-dynamics, and crossovers. Problem solving processes include surgical EQ and multi-mode dynamics to tame your most unruly mic or line signals.



# Get in the Zone with Zone Mix 761 Software

## Zone Mix 761 Software

### PRODUCT OVERVIEW

Complete programming and control software for Zone Mix 761.

### COMMON SELLING POINTS

- A Full-featured Background Music and Paging Application
- Familiar Hardware-like Layout
- Turn-key Programming
- The graphic user interface presents a hardware-like layout for quick and easy programming and rapid deployment
- A flexible routing matrix distributes multiple music sources and paging
- The app supports multi-priority paging plus an emergency source
- Up to eight audio media input sources can be distributed into six zones
- A perfect match for night clubs, sports bars, restaurants, hotels, retail establishments, and fitness clubs, among others
- Sophisticated DSP on all inputs and outputs
- Comprehensive external control options include ARC Wall Panels, ARC-WEB, and/or third-party touch-screens via RS-232 or UDP/IP

### QUICK AND EASY SET-UP

A turn-key Windows® application presents a familiar hardware-like layout for quick and easy programming and rapid deployment.

### DEEP FUNCTIONALITY

A flexible routing matrix that distributes multiple music sources and paging into six zones; multi-priority paging from three page stations plus an emergency source; eight audio media Inputs sources distributed into six zones; sophisticated DSP processing on all inputs and outputs.

### COMPREHENSIVE EXTERNAL CONTROL OPTIONS

ARC wall panels, ARC-WEB, and/or 3rd party touch-screens via RS-232 or UDP/IP.

### A PERFECT MATCH

The software app, paired with the 761's hardware features and application specific I/O, makes a perfect match for night clubs and sports bars, restaurants, hotels, retail establishments, and fitness clubs to name a few possibilities.



# Accessorize Your Symetriverse



Making Quality Connections

## 1/2 U Filler Panel



Part Number 80-0123

### Product Highlights

- Used with 19" 1U Rack Tray to fill an unused 1/2 rack space

### Compatible Products

- Prism 0x0, Prism 4x4
- xIn 4, xOut 4, xIO 4x4
- xControl, ARC-PSe
- Control Server

### Compliance

RoHS

## 1/2 U Surface Mount Bracket



Part Number 80-0108

### Product Highlights

- Bracket for mounting a single half rack unit under table, onto wall, or onto other flat surfaces

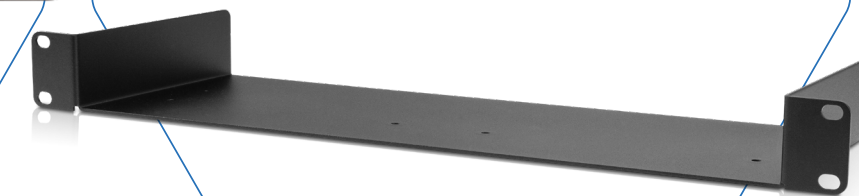
### Compatible Products

- Prism 0x0, Prism 4x4
- xIn 4, xOut 4, xIO 4x4
- xControl, ARC-PSe
- Control Server

### Compliance

RoHS

## 1 U Rack Tray



Part Number 80-0107

### Product Highlights

- 19 inch rack tray for mounting up to two half rack units in a 1 U rack space

### Compatible Products

- Prism 4x4
- xIn 4, xOut 4, xIO 4x4
- xControl, ARC-PSe
- 1/2 U Filler Panel
- Control Server

### Compliance

RoHS

## T5 Glass Stand



T-5 Glass Tabletop Stand Part Number 80-0166

### Product Highlights

- Table mount for Symetrix's T-5 Glass Touchscreen
- Powder-coated steel
- Fixed or movable installation
- 58 degree viewing angle
- Non-slip padded base

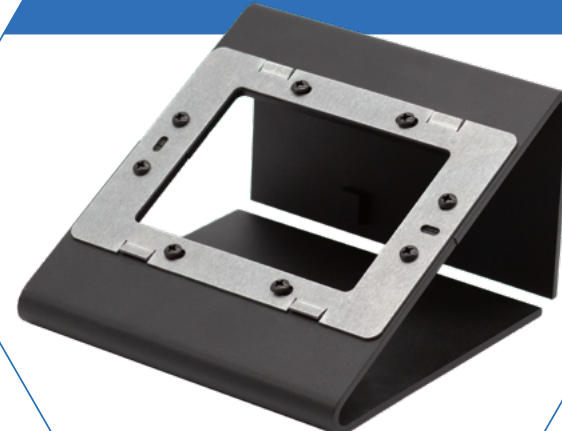
### Compatible Products

- T5 Glass Touchscreen

### Compliance

RoHS

## T10 Glass Stand



T-10 Glass Tabletop Stand Part Number 80-0192

### Product Highlights

- Table mount for Symetrix's T-10 Glass Touchscreen
- Powder-coated steel
- Dual viewing angle support: 60° or 30°
- Non-slip padded base

### Compatible Products

- T10 Glass Touchscreen

### Compliance

RoHS

## RCA to Euroblock Cable



Part Number 40-0023

### Product Highlights

- Three foot cable has two male RCA connectors on one end, two 3.81 mm Euroblock connectors on the other
- Allows easy interconnect between industry standard RCA jacks and 3.81 mm Euroblock type connectors

### Compatible Products

- Compatible with all Symetrix DSPs and audio accessories fitted with 3.81 mm Euroblock I/O connections

### Compliance

RoHS

## 3.5 mm TRS to Euroblock Cable



Part Number 40-0025

### Product Highlights

- Three foot cable has a 3.5 mm TRS mini male connector on one end, two 3.81 mm Euroblock connectors on the other
- Allows easy interconnect between industry standard 3.5 mm TRS mini jacks and 3.81 mm Euroblock type connectors

### Compatible Products

- Compatible with all Symetrix DSPs and audio accessories fitted with 3.81 mm Euroblock I/O connections

### Compliance

RoHS

# Professional Services

## WELCOME TO PROFESSIONAL SERVICES

Symetrix Professional Services are fee-based services that leverage the experience and knowledge of Symetrix Applications Engineers to provide engineering support for our customers' projects. Symetrix Professional Services include Site File Programming, Custom Intelligent Module creation, and remote or on-site Commissioning.

## CUSTOM SITE FILE PROGRAMMING

Symetrix Professional Services can generate a quote, based on your I/O list and system description, to create a fully complete Composer site file that's ready to be uploaded to your system. Programming is always specific to each project and is available as a line item that can be added to a specification or project bid.

## CUSTOM INTELLIGENT MODULE CREATION

Intelligent Modules expand the capabilities of a DSP to provide customizable control of third-party products and powerful manipulation of control data within a system. Symetrix Professional Services can create custom Intelligent Modules using Lua scripting for your unique ecosystem. If you need an Intelligent Module created and don't have the time or resources to create it yourself, let our experienced team of Application Engineers craft a custom Intelligent Module designed to your detailed requirements. Symetrix Professional Services can create custom Intelligent Modules for nearly any application. Contact Symetrix Professional Services today for more information.

## REMOTE COMMISSIONING SERVICES

Symetrix Professional Services can schedule a Symetrix Application Engineer to be available during all phases of your on-site setup and commissioning. If you can provide a computer or laptop that has a network connection to the AV system and an Internet connection, a Symetrix Applications Engineer can be your full-time remote assistant during critical system commissioning and setup. This allows your staff to focus on system testing, verification, and documentation while we handle controlling and configuring the system.

## ON-SITE COMMISSIONING SERVICES

For critical sites, Symetrix Professional Services can schedule a Symetrix Applications Engineer to provide on-site assistance with setup and commissioning of your system. For severely time constrained systems or high-profile clients, a Symetrix Applications Engineer on site provides your staff confidence so that they won't need to think about the hardware and can concentrate on commissioning the system.

## PROFESSIONAL BENEFITS

Symetrix Configuration Support Services are designed to contribute to your success on any installation. Our professional team will work with you to achieve:

- Reduced project time to implement
- In-depth product knowledge
- Improved technical efficiencies
- Cost control

## PRICING AND BILLING

To obtain a quote for a given project, contact Symetrix Professional Services today. Fill out [Symetrix Pro-Services Request Form](#).





# Symetrix

Engineered in Seattle

[www.symetrix.co](http://www.symetrix.co)



Follow us for updates,  
news and more.